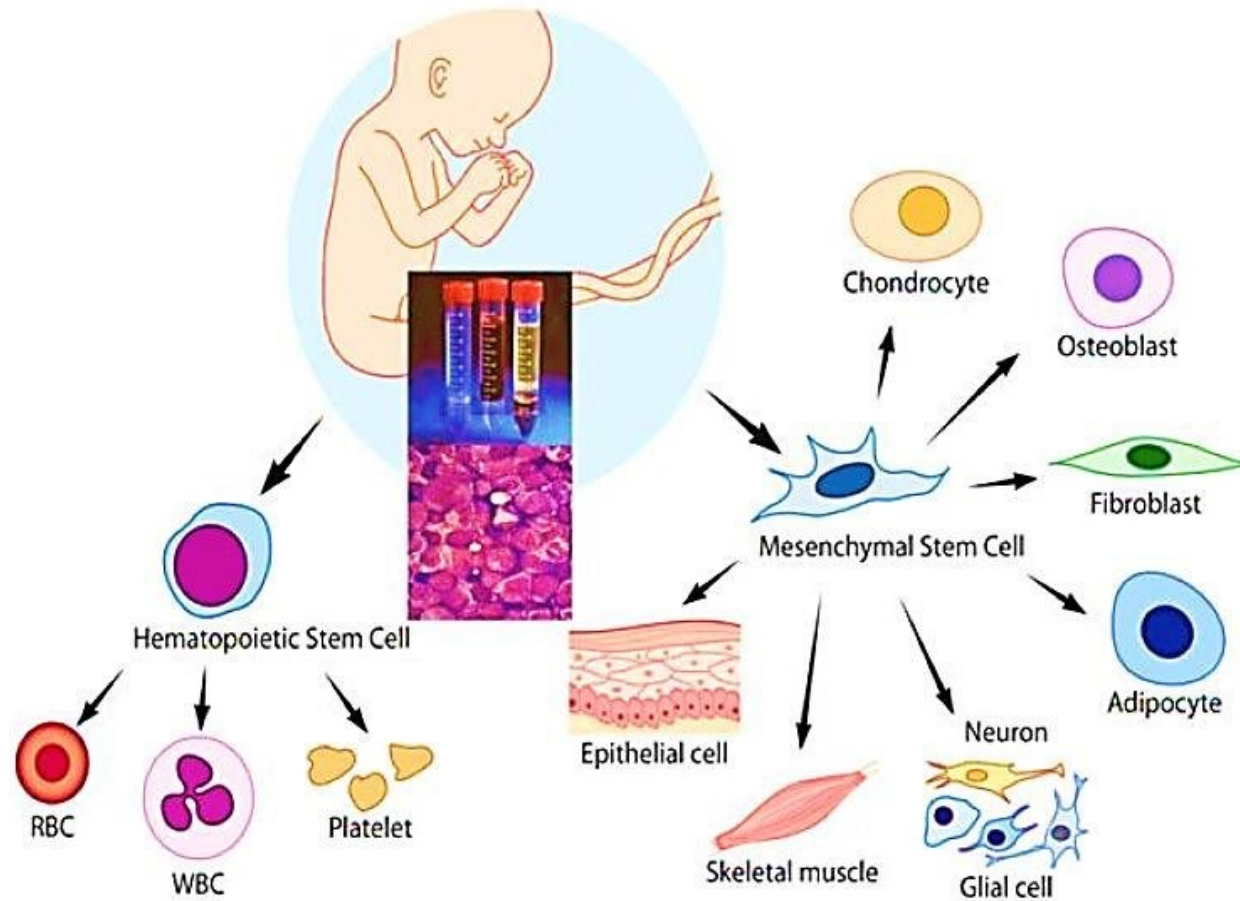
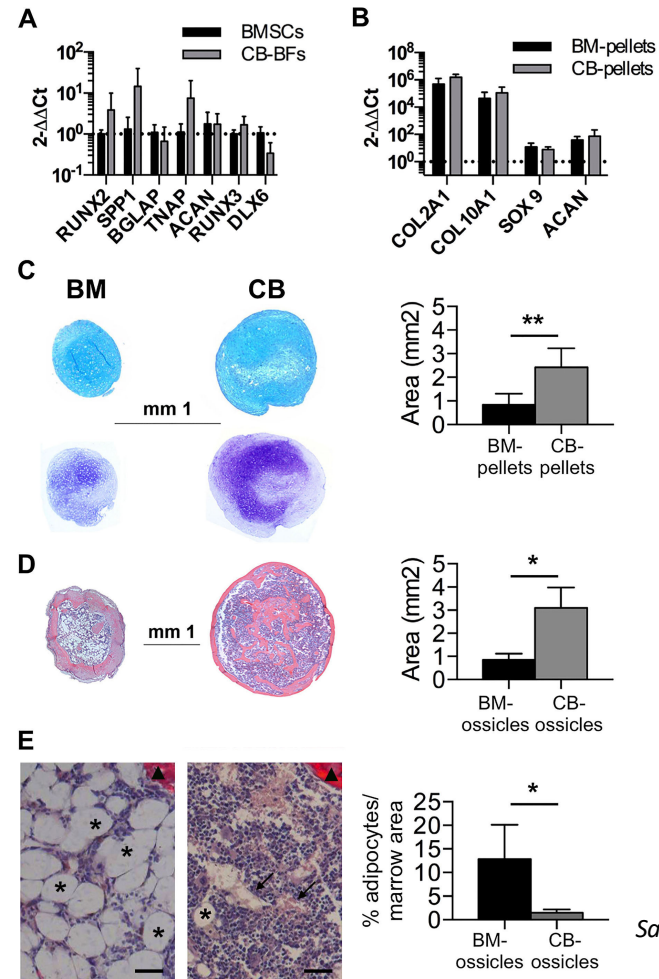
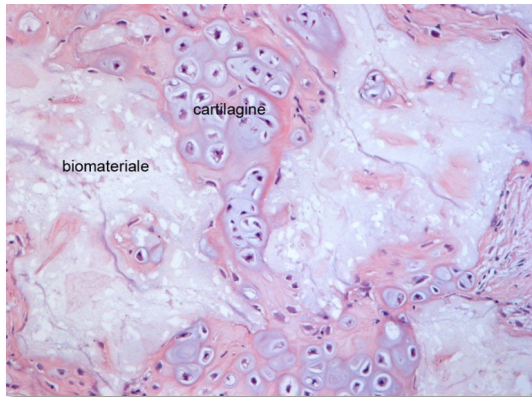
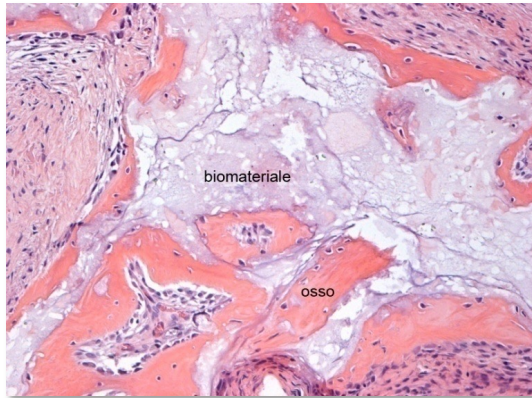


Cord blood, a source of different type of stem cells



Umbilical Cord Blood-Derived Multipotent Stromal Cells Contain Hematopoietic Stem Cell Niche Precursors



Sacchetti, *Stem Cell Reports* 2016
Pievani, *Development* 2017

Fig.2

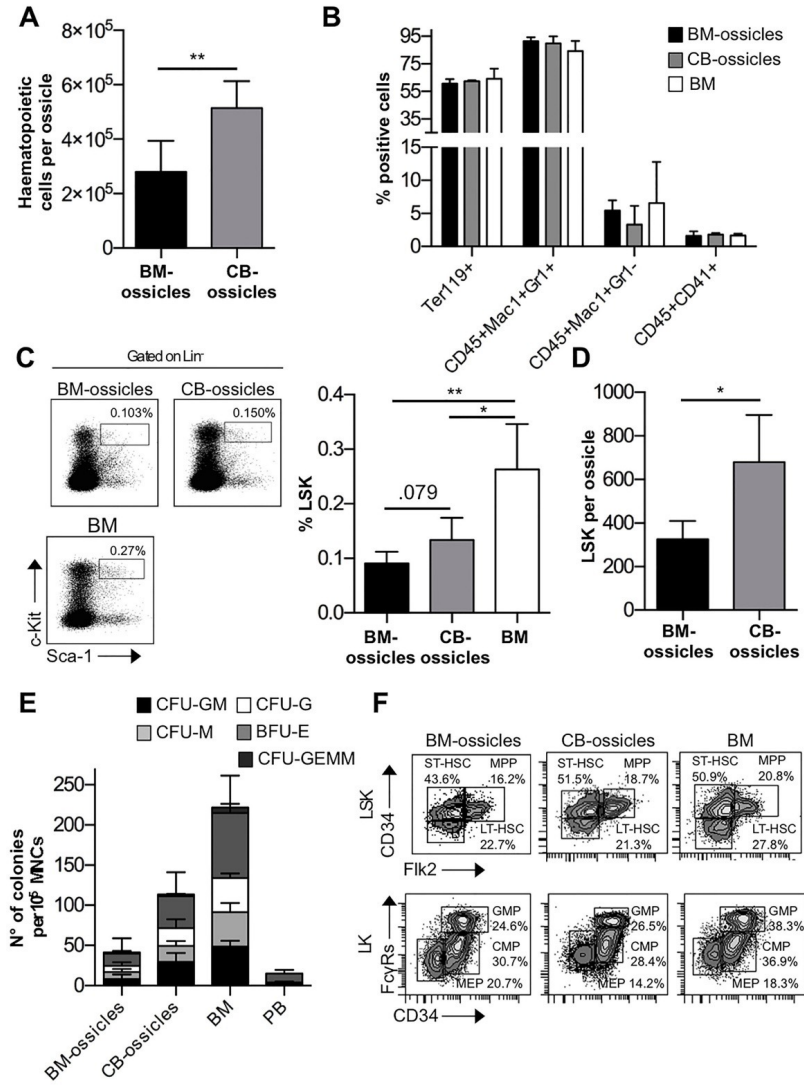
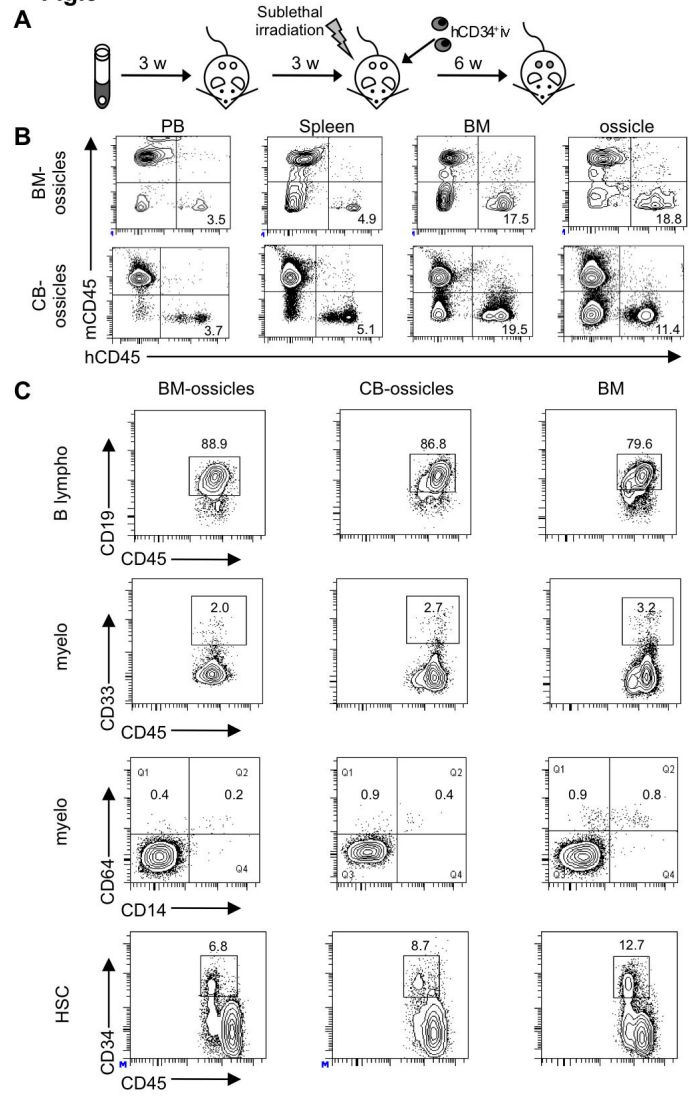
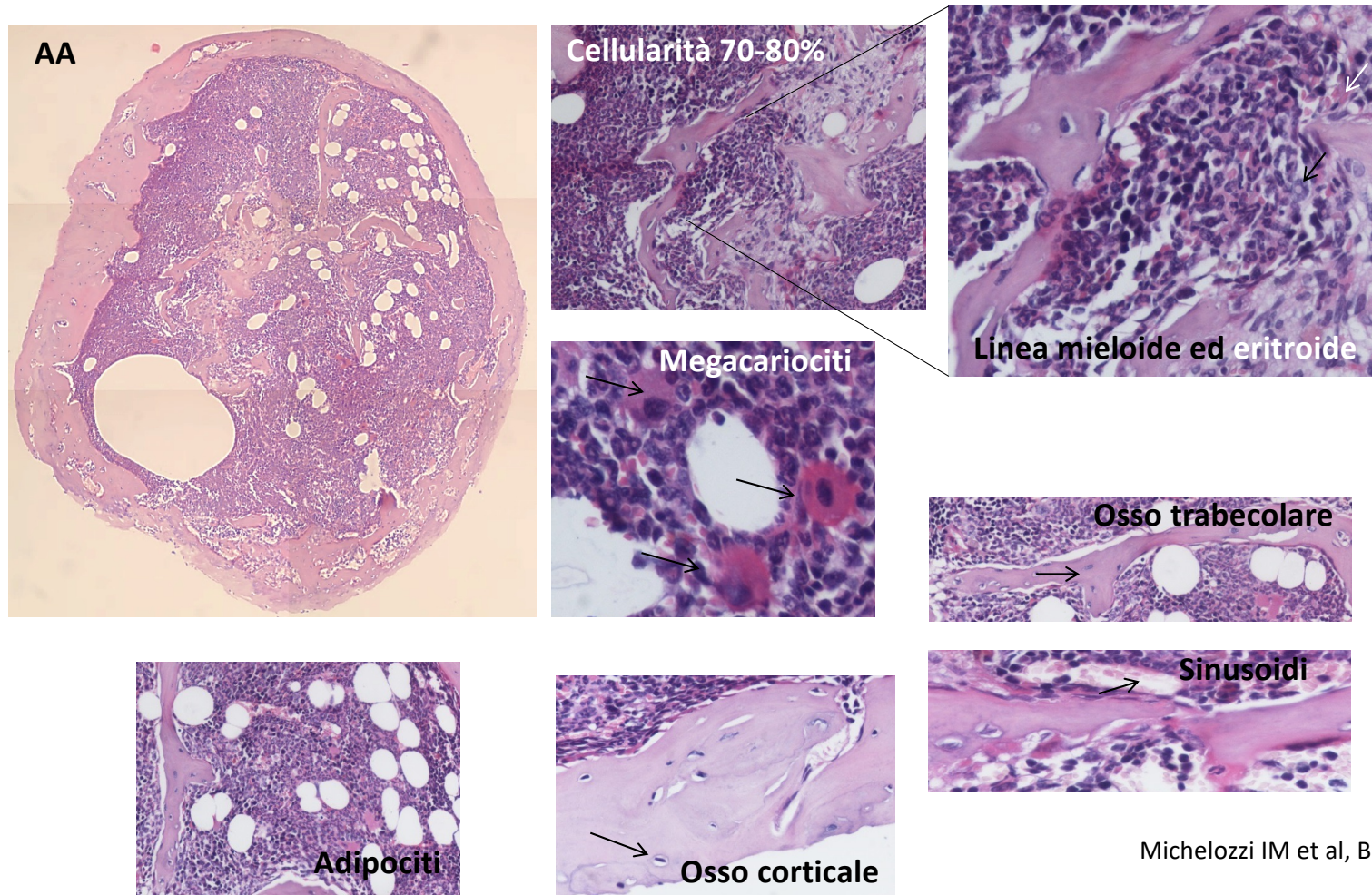


Fig.3



Aplastic anaemia-derived mesenchymal stromal cells form functional BM niche



Michelozzi IM et al, Br J Hematol 2016

Hemopoietic and stromal compartment

