



# Alzheimer disease

David S. Knopman<sup>1</sup>✉, Helene Amieva<sup>2</sup>, Ronald C. Petersen<sup>1</sup>, G el Ch etelat<sup>3</sup>,  
David M. Holtzman<sup>4</sup>, Bradley T. Hyman<sup>5</sup>, Ralph A. Nixon<sup>6,7</sup> and David T. Jones<sup>1</sup>

**Abstract** | Alzheimer disease (AD) is biologically defined by the presence of  $\beta$ -amyloid-containing plaques and tau-containing neurofibrillary tangles. AD is a genetic and sporadic neurodegenerative disease that causes an amnesic cognitive impairment in its prototypical presentation and non-amnesic cognitive impairment in its less common variants. AD is a common cause of cognitive impairment acquired in midlife and late-life but its clinical impact is modified by other neurodegenerative and cerebrovascular conditions. This Primer conceives of AD biology as the brain disorder that results from a complex interplay of loss of synaptic homeostasis and dysfunction in the highly interrelated endosomal/lysosomal clearance pathways in which the precursors, aggregated species and post-translationally modified products of A $\beta$  and tau play important roles. Therapeutic endeavours are still struggling to find targets within this framework that substantially change the clinical course in persons with AD.

Alzheimer disease (AD) is a neurodegenerative disorder characterized by  $\beta$ -amyloid (A $\beta$ )-containing extracellular plaques and tau-containing intracellular neurofibrillary tangles. AD typically presents with prominent amnesic cognitive impairment but can also less commonly manifest as non-amnesic cognitive impairment. The presentation of AD with short-term memory difficulty is most common but impairment in expressive speech, visuospatial processing and executive (mental agility) functions also occurs. Most cases of AD are not dominantly inherited and there is a complex relationship to genetics in many persons with AD.

The severity of cognitive impairment in patients with AD varies. The earliest manifestations can be a subjective decline in mental abilities in the absence of impaired performance on objective cognitive testing<sup>1</sup>. Mild cognitive impairment (MCI) refers to the earliest symptomatic stage of cognitive impairment in which a single cognitive domain or, possibly, multiple cognitive domains are impaired to at least a mild extent whilst functional capacities are relatively preserved<sup>2</sup>. By contrast, dementia is defined as cognitive impairment of sufficient magnitude to impair independence and affect daily life. Dementia of gradual onset and ongoing progression with prominent amnesic symptoms and signs is the prototypical clinical phenotype of AD<sup>3</sup>.

AD was originally considered a clinicopathological entity, meaning that, if the patient fulfilled the clinical syndrome of an amnesic dementia and other conditions were ruled out, one could assume that AD pathology was the cause<sup>4</sup>. However, increased clinical sophistication together with biomarkers of AD, namely cerebrospinal fluid (CSF) and PET markers for A $\beta$  and tau, has transformed the concept of AD to a neurobiological condition

that affects different aspects of cognition. Of note, there is a greater appreciation of the relationship between AD and other aetiologies of cognitive impairment. Although multi-aetiology dementia (which is the preferred term over ‘mixed dementia’) is not the focus of this Primer, it is important to remember that AD pathology rarely occurs in isolation in patients >65 years of age.

This Primer reviews the epidemiology of the cognitive manifestations of AD and highlights the main risk factors of this disorder. In addition, this Primer summarizes the pathophysiology of AD from the perspective of a synaptic disorder and reviews advances in its diagnosis, including clinical diagnosis and advances in biomarkers, as well as the management and quality of life of persons living with cognitive impairment due to AD and that of their caregivers.

## Epidemiology

### Incidence and prevalence

The epidemiology of AD is intertwined with that of all-cause dementia<sup>5,6</sup> (FIG. 1). Although AD is the most common cause of dementia<sup>7</sup>, dementia can be caused by multiple neurodegenerative or cerebrovascular pathologies, particularly in older patients<sup>8,9</sup>. Indeed, in one study of 184 individuals who met research neuropathological criteria for AD<sup>9</sup>, 31% had only AD pathology, 22% had AD pathology plus  $\alpha$ -synuclein pathology (Lewy bodies outside of the brainstem), 29.5% had AD pathology plus TDP43 pathology (TDP43 inclusions in hippocampi), and 17.5% had AD pathology plus  $\alpha$ -synuclein and TDP43 pathology. Within each of these pathologically defined groups, between 29% and 52% of individuals had at least one infarct (microinfarct, lacunar infarct or large infarct)<sup>9</sup>.

✉e-mail: knopman@mayo.edu  
<https://doi.org/10.1038/s41572-021-00269-y>

### Author addresses

<sup>1</sup>Department of Neurology, Mayo Clinic, Rochester, MN, USA.

<sup>2</sup>Inserm U1219 Bordeaux Population Health Center, University of Bordeaux, Bordeaux, France.

<sup>3</sup>Normandie Univ, UNICAEN, INSERM, U1237, PhIND “Physiopathology and Imaging of Neurological Disorders”, Institut Blood and Brain @ Caen-Normandie, Cyceron, Caen, France.

<sup>4</sup>Department of Neurology, Washington University School of Medicine, St. Louis, MO, USA.

<sup>5</sup>Department of Neurology, Massachusetts General Hospital, Boston, MA, USA.

<sup>6</sup>Departments of Psychiatry and Cell Biology, New York University Langone Medical Center, New York University, New York, NY, USA.

<sup>7</sup>NYU Neuroscience Institute, New York University Langone Medical Center, New York University, New York, NY, USA.

The prevalence of all-cause dementia is expected to increase from 50 million people in 2010 to 113 million by 2050 worldwide<sup>10</sup>. Although the prevalence of dementia has increased in both high-income and middle/low-income countries over the past 50 years owing to an extended life expectancy<sup>11</sup>, the incidence of dementia has slightly decreased in some high-income countries such as the USA, UK and France<sup>11</sup>. For example, in the Framingham Heart Study, the age-adjusted and sex-adjusted hazard rate for incident dementia in persons aged >60 years was 3.6 per 100 persons in the late 1970s and early 1980s but 2.2 per 100 persons by the late 2000s and early 2010s<sup>12</sup>. The lower incidence of dementia in people born more recently could be due to the educational, socio-economic, health-care and lifestyle changes that have occurred in the past several decades. In particular, greater educational attainment is a protective factor against dementia presumably because it conveys a greater capacity to withstand the consequences of neurodegenerative and cerebrovascular disease (referred to as ‘cognitive resilience’<sup>13</sup>). However, attempts at proving cause-and-effect relationships between the various mitigating factors and dementia incidence have proved difficult<sup>12,14</sup>. Of note, the reduction in dementia incidence cannot be specifically attributed to AD, although one neuropathological study found a trend for a 24% decline in brain A $\beta$  burden from 1972 to 2006 in a sample of 1,599 individuals with a mean age of 82  $\pm$  8 years<sup>15</sup>.

The prevalence of overt cognitive impairment increases exponentially with advancing age. Indeed, the incidence of dementia increases steeply after 65 years and continues to increase thereafter. The incidence of all-cause dementia in individuals aged 65–70 years is approximately 1 per 100 per year and increases to 4 per 100 per year in those aged 80–90 years<sup>16</sup>. In a meta-analysis of 20 studies from Europe and North America, the prevalence of clinically diagnosed amnesic dementia (dementia attributed without biomarkers of AD) increased from <1% in persons aged 65–69 years to 7–8% in those aged 80–84 years to 27% in those aged 90–94 years<sup>17</sup>. In general, the incidence of MCI is about twice that of dementia at any given age<sup>18</sup>. Studies using MRI and PET to estimate the burden of AD have estimated that MCI with AD pathology contributes to ~50% of all cases of MCI<sup>19</sup> and dementia due to AD contributes to ~60–90% of all dementia cases<sup>20</sup>. Other aetiologies,

such as cerebrovascular disease and Lewy body disease, may be contributory in up to half of persons with AD<sup>21</sup>. The fastest-growing demographic segment in high-income countries is the oldest-old group (people aged >90 years), which is the group with the highest risk of cognitive disorders, particularly multi-aetiology dementia. Improvement in survival into older adulthood in low-income and middle-income countries<sup>11</sup> is driving an increased overall societal burden of dementia.

The prevalence and incidence of dementia have been well studied in high-income countries but are less well understood in low-income and middle-income countries. Provisional estimates support the view that dementia is a worldwide illness with little variation in age-specific prevalence between regions<sup>22</sup>. The prevalence of subjective cognitive complaints was 25% worldwide in one meta-analysis of 16 studies, although individual estimates varied from 6% to 53%<sup>23</sup>, implying diversity in how subjective cognitive decline is defined both within and across different regions and cultures. Similar to dementia, the prevalence of MCI varies by age — the reported prevalence was 6.7% in individuals aged 60–64 years and 25.2% in those aged 80–84 years in a meta-analysis of 34 studies from high-income countries<sup>24</sup>.

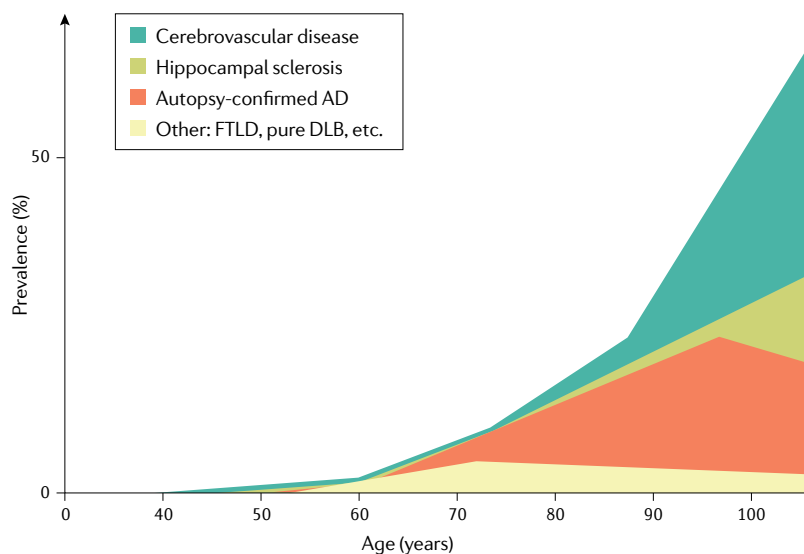
### Risk factors

Age is the most important risk factor for both dementia and AD. In the aged population worldwide, for example, in those aged >65 years, more women than men have dementia owing to an excess all-cause mortality in men aged >45 years<sup>11</sup>. In addition, the prevalence of mild cognitive impairment may be higher in men; one study found an OR of 1.54 (95% CI 1.2–2.0) for MCI in men versus women in a community comprised of European-Americans<sup>25</sup>. However, in many studies, the prevalence of dementia is either higher in women or finds no difference between sexes<sup>26</sup>.

Genetic risk factors for AD include rare dominantly inherited mutations in *APP*, *PSEN1* and *PSEN2* and in more common but incompletely penetrant genetic variations such as *APOE*. Taken together, genetic contributions represent only a modest part of the attributable risk as manifested in the age of onset<sup>27</sup>.

Dominantly inherited AD has an age of onset that is ~40 years earlier than sporadic late-onset AD but otherwise shares many clinical, biomarker and pathological similarities. Mutations in *APP* (encoding amyloid precursor protein (*APP*)), *PSEN1* (encoding presenilin 1) and *PSEN2* (encoding presenilin 2) account for almost all cases of dominantly inherited AD<sup>28</sup>. Persons with mutations in these genes are almost always younger than 65 years when they develop symptoms and represent only a minority of persons with AD dementia in this age group, in which AD and frontotemporal degenerations are about equally common. A rare variant of *APP* (A673T) that is protective against A $\beta$  production and clinical symptomatology has been identified<sup>29</sup>.

More than 600 genes have been investigated as susceptibility factors for AD. *APOE* is a susceptibility polymorphism and is the most important genetic risk factor for AD occurring after 65 years. Carriage of the *APOE*  $\epsilon$ 4 allele increases the risk for dementia by 3–4 times



**Fig. 1 | Neuro-pathological diagnoses that cause cognitive impairment across the age spectrum.** Alzheimer disease (AD) may occur without other co-pathologies in those <70 years of age but other pathologies are common in older individuals with AD pathology. DLB, dementia with Lewy bodies; FTLN, frontotemporal lobar degeneration. Adapted from REF.<sup>5</sup>, Springer Nature Limited.

in heterozygotes and by 12–15 times in homozygotes compared with *APOE*  $\epsilon$ 3 carriers<sup>30</sup>. Some susceptibility genes, such as *TREM2*, *SORL1* and *ABCA7* (REF.<sup>31</sup>), if combined, may be useful in polygenic risk scores, even accounting for the presence of the *APOE*  $\epsilon$ 4 genotype, for predicting incident dementia due to AD<sup>32</sup>. The rare genetic variants convey a lower risk of AD than the *APOE*  $\epsilon$ 4 allele; indeed, the rare R47H variant of *TREM2* conveys a tenth of the risk of heterozygosity of *APOE*  $\epsilon$ 4 and all of the other identified risk genes are 100-fold less potent than *APOE*  $\epsilon$ 4 (REF.<sup>33</sup>). Mutations in *MAPT* (encoding tau) are not associated with AD, although variants of tau-binding proteins such as *BIN1*, *CD2AP*, *FERMT2*, *CASS4* and *PTK2B* are risk genes in large-scale analyses<sup>34</sup>. The genetics of rare variants has played and will continue to play a critical role in suggesting important disease mechanisms in AD.

Several potentially modifiable risk factors occurring in midlife, in particular metabolic factors (diabetes mellitus, hypertension, obesity and low HDL cholesterol), hearing loss, traumatic brain injury and alcohol abuse, are associated with an increased risk of later-life dementia, with relative risks of between 1.5 and 1.8 (REF.<sup>35</sup>). In later life, smoking, depression, low physical activity, social isolation, diabetes mellitus and air pollution are risk factors of similar magnitude for dementia, although several of these, such as low physical activity, social isolation and depression, may have a bi-directional link and may be part of the prodromal phase of dementia<sup>36</sup>. Diabetes mellitus and hypertension are probably the most common and important risk factors for late-life dementia, especially when those risk factors are present in midlife<sup>37</sup> but in late life as well<sup>38</sup>. Although there is some evidence for an influence of midlife vascular risk factors on later-life brain  $A\beta$ <sup>39</sup>, both diabetes mellitus and hypertension induce cerebrovascular disease and are thought to affect the clinical expression of AD pathology

through the modifying effects of atherosclerotic and arteriosclerotic cerebrovascular disease rather than through a direct effect on  $A\beta$  or tau biology<sup>40</sup>.

### Mechanisms/pathophysiology

AD is a synaptic dysfunction disorder encompassing molecular, cellular and macro-scale cortical circuitry system failures that has a predilection for a cognitively eloquent cortex. Synaptic pathophysiology is an attractive theme in unifying observations about genetics, cell biology, neuropathology and the clinical manifestations of AD. The pathology of AD can be viewed as positive ('overt') lesions that can be observed using microscopy, that is, tau-containing neurofibrillary tangles,  $A\beta$ -containing plaques, activated glia or enlarged endosomes. Alternatively, AD can be viewed as representing negative ('covert') phenomena, that is, the loss of synaptic homeostasis, neurons or neuronal network integrity. While the biology of amyloid precursor protein and tau protein is featured prominently throughout this Primer, the apparent primacy of these proteins as embodied in the amyloid cascade hypothesis<sup>41</sup> fails to acknowledge the many other covert mechanisms, not all of which can be covered here<sup>42,43</sup>, that have been hypothesized as relevant. Understanding how the mechanisms that underlie AD lead to synaptic and neuronal loss, which are the likely causes of cognitive impairment, has been a matter of substantial investigation yet much remains to be learned.

### The critical molecules

The pathology of canonical AD dementia involves  $A\beta$ -containing extracellular neuritic plaques that are found in a widespread distribution throughout the cerebral cortex and tau-containing neurofibrillary tangles that occur initially in the medial temporal lobe, followed by the isocortical regions of the temporal, parietal and frontal lobes<sup>44,45</sup>.

$A\beta$  peptides are derived from APP (a single transmembrane protein that is enriched in neuronal synapses<sup>46</sup>) following the cleavage of APP by  $\beta$ -secretases and  $\gamma$ -secretases (known as the amyloidogenic pathway)<sup>47,48</sup> (FIG. 2). The most abundant species of  $A\beta$  are 27–43 amino acids in length. After production,  $A\beta$  is secreted into the extracellular space as a monomer<sup>47</sup>. Owing to its sequence,  $A\beta$  (particularly  $A\beta_{42}$ ) has a high propensity to aggregate, which occurs in a concentration-dependent manner. In addition to  $A\beta$ , other molecules — APPs $\beta$ ,  $\beta$ CTF and AICD — are formed in the amyloidogenic pathway. APP cleavage by  $\alpha$ -secretase generates APPs $\alpha$  and  $\alpha$ CTF and prevents  $A\beta$  formation;  $\alpha$ CTF is subsequently cleaved by  $\gamma$ -secretase into p3 and AICD<sup>49</sup>. Although all cells produce  $A\beta$ , it is generated in high levels by synaptic activity and its production and release are regulated by synaptic activity<sup>50</sup>.  $A\beta$  levels are also modulated by the sleep–wake cycle<sup>51</sup>.  $A\beta$  production and release into the extracellular space is higher during wakefulness and  $A\beta$  clearance through the glymphatic system is higher during sleep<sup>52</sup>.

In keeping with the hypothesis that  $A\beta$ , particularly in its oligomeric form, is toxic, oligomeric  $A\beta$  interacts with metabotropic glutamate receptor 5 and NMDA

receptors<sup>53,54</sup> and seems to interact with several other receptors such as  $\alpha 7$  nicotinic acetylcholine receptor and insulin receptors. In addition,  $A\beta$  also seems to cause pathological changes in dendritic spines and synaptic efficiency. Although aggregated  $A\beta$  is the overt lesion that could cause neurotoxicity, dysregulated APP processing may also have 'covert' effects on synaptic function. APP cleavage products have normal physiological functions. For example, APPs $\alpha$  is a ligand for a subtype of GABA receptor that modulates synaptic transmission<sup>55</sup>. In addition, other cleavage products, such as APPs $\beta$  and APPs $\eta$ , have cellular receptors that suggest they might also modulate synaptic activity<sup>49,56</sup> and non- $A\beta$  fragments of APP, such as C-terminal fragments<sup>57</sup>, seem to play a critical role in endosomal and lysosomal function.

Tau is a microtubule-associated protein that is normally present in the cytoplasm of axons<sup>58</sup> but is also present in both presynaptic and postsynaptic compartments and associated with the nuclear membrane<sup>59,60</sup>. Tau occurs in six isoforms due to alternate splicing of exons 2, 3 and 10; the isoforms are named according to the presence of either three or four microtubule-binding domains as the 3R or 4R isoforms, respectively<sup>61</sup>. The tau species that occurs in AD is a mixture of 3R and 4R tau. The main function of tau is microtubule stabilization<sup>59,60</sup>. Tau may become prone to post-translational modifications and to aggregate. When this happens, it accumulates in a hyperphosphorylated form in cell bodies and dendrites. Tau is released into the extracellular space by synaptic activity<sup>62,63</sup> and is taken up in postsynaptic neurons and glia<sup>64</sup>.

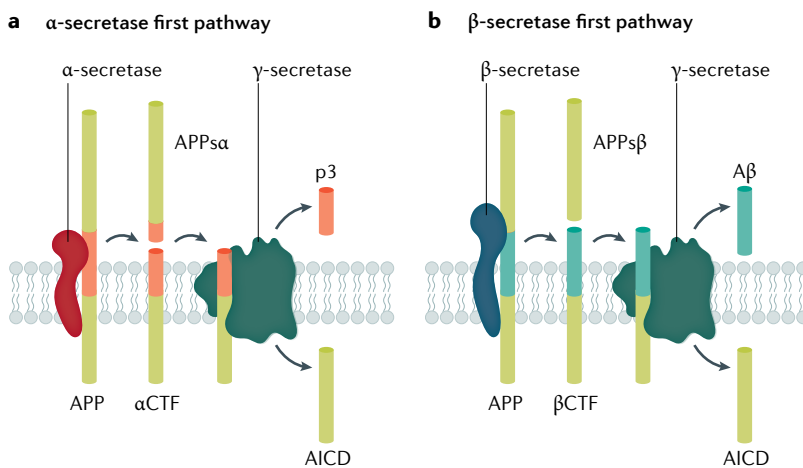
Different post-translational modifications of tau might allow it to be differentially taken up in postsynaptic neurons or glia, differentially processed or truncated, or to cause seeded aggregation. In addition, tau

post-translational modifications affect the rate of AD progression<sup>65</sup>. There is emerging evidence that ApoE<sup>66</sup>, TREM2 (REF.<sup>67</sup>) and microglia<sup>68</sup> play an important role in tau-mediated neurodegeneration although the mechanisms that relate presumed microglial activity to tau toxicity are unknown.

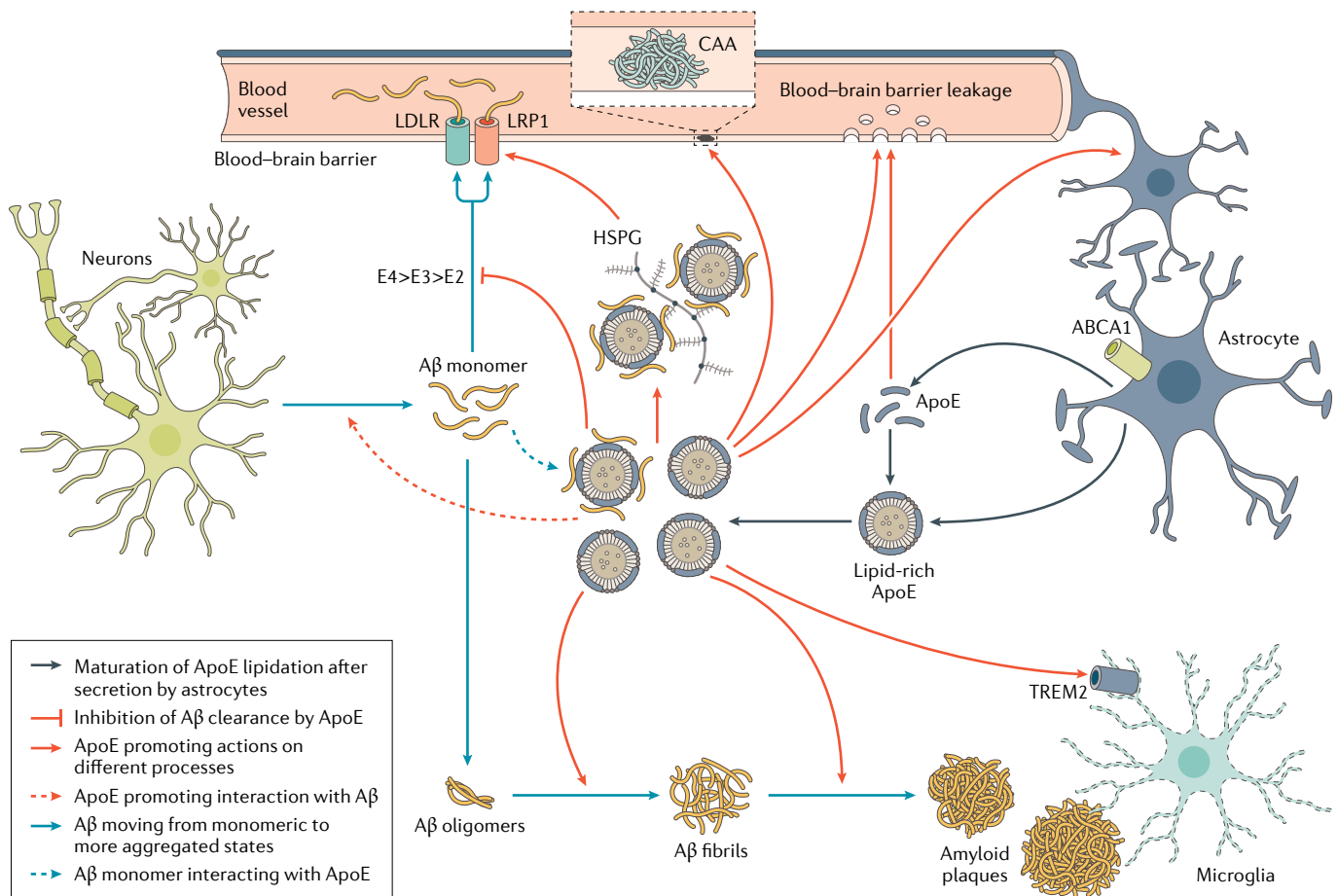
Aggregated 3R and 4R tau appear histologically as neurofibrillary tangles (intracellular tau aggregates), neuropil threads (tau fragments in the neuropil) and dystrophic neurites (tau-containing degenerated axons and dendrites surrounding  $A\beta$  plaques). Although these structures can be seen in some brainstem nuclei in young adults<sup>69</sup>, tauopathy in the medial temporal lobe is the initial site relevant to cognition<sup>70,71</sup>. Medial temporal tauopathy may occur independently of  $A\beta$  pathology<sup>72,73</sup>. In some patients in whom elevations in  $A\beta$  never occur, medial temporal tauopathy (referred to in these patients as primary age-related tauopathy)<sup>74</sup> may persist without the involvement of other regions. However, tauopathy of the AD type progresses outside the medial temporal lobe only in those with elevated brain  $A\beta$ <sup>75-77</sup>. Region-specific cognitive deficits occurring in MCI and dementia reflect the sequential expansion of tau accumulation from the medial temporal lobe to interconnected temporal, parietal and frontal association cortices<sup>77,78</sup> (see Clinical manifestations).

Apolipoprotein E (ApoE) is at the crossroads of clinical, genetic and cellular mechanistic aspects of AD<sup>79</sup>. The *APOE* gene encodes the ApoE protein, which is produced in the brain predominantly by astrocytes and activated microglia<sup>79</sup>. In humans, there are three common isoforms, ApoE2, ApoE3 and ApoE4, which only differ by a single amino acid at position 112 or 158 (REF.<sup>79</sup>). Carriers of the *APOE*  $\epsilon 4$  allele have a dose-dependent increased risk for AD dementia<sup>80</sup>. There are several mechanisms by which ApoE may influence AD risk, one of which is by affecting the onset of  $A\beta$  aggregation in the brain by altering the clearance and seeding of  $A\beta$ <sup>80</sup> (FIG. 3; also see Dysfunctional proteostasis, below). The three ApoE isoforms modulate  $A\beta$  clearance and seeding to varying extents, with ApoE4 having the strongest effect on the slowing of clearance, followed by ApoE3 then ApoE2 (REF.<sup>80</sup>). Accordingly, *APOE*  $\epsilon 4$  carriage can cause early  $A\beta$  accumulation in a dose-dependent manner before the onset of clinical symptoms<sup>81</sup>. Approximately 10% of *APOE*  $\epsilon 4$  carriers have increased  $A\beta$  by age 57 years (as assessed using  $A\beta$ -PET), while *APOE*  $\epsilon 4$  non-carriers have increased  $A\beta$  about 7 years later<sup>82</sup>.

The precise mechanisms by which  $A\beta$ /APP and tau interact are not well understood<sup>83-85</sup>. Transgenic mice with  $A\beta$ -overexpression with wild-type tau develop either no tauopathy or one that is dissimilar to AD<sup>86,87</sup>. Transgenic animals that contain both APP and tau mutants have interactions between  $A\beta$  and tau<sup>85</sup> but it is not clear whether this model system replicates human AD. Conceptually, there are several cellular systems in which  $A\beta$ /APP, tau and ApoE might interact: the synapse<sup>53</sup>, in microglia<sup>88</sup> and in the endosomal/lysosomal/proteasomal system<sup>89,90</sup>. Alternatively, neural systems that accumulate  $A\beta$  and those that accumulate tau might be distinct but interact primarily through the connectome.



**Fig. 2 | APP cleavage pathways. a** | In the non- $\beta$ -amyloid ( $A\beta$ ) pathway, successive cleavage by  $\alpha$ -secretase leads to the formation of APPs $\alpha$  and  $\alpha$ CTF, which in turn is cleaved by  $\gamma$ -secretase to yield the extracellular peptide p3 and the intracellular fragment AICD. APPs $\alpha$  may modulate synaptic transmission through a GABA receptor. **b** |  $A\beta$  is formed in the 'amyloidogenic' pathway by the successive cleavage of amyloid precursor protein (APP) by  $\beta$ -secretase into APPs $\beta$  and  $\beta$ CTF, the latter being then subjected to  $\gamma$ -secretase, producing  $A\beta$  and AICD.  $\beta$ CTF plays a key role in early endosomal abnormalities in AD. Note that the production of  $A\beta$  is necessarily in equal amounts to AICD and APPs $\beta$  and in inverse amounts to p3 and APPs $\alpha$ . Adapted with permission from REF.<sup>48</sup>, Elsevier.



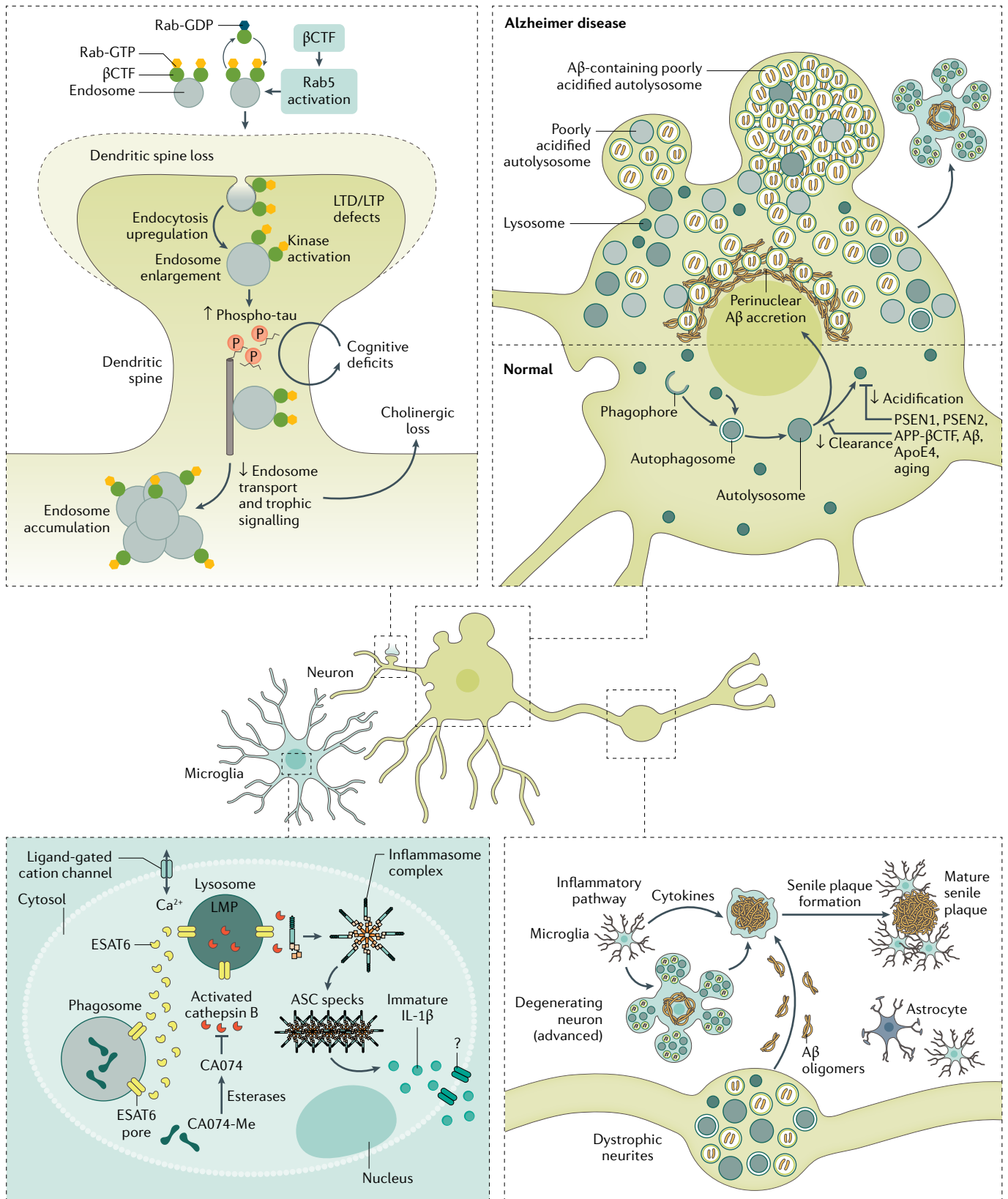
**Fig. 3 | ApoE and Aβ interaction.** In one pathway, monomeric  $\beta$ -amyloid (A $\beta$ ) aggregates into oligomers, then into fibrils and finally becomes part of amyloid plaques. ABCA1 participates in the lipidation of ApoE, which has a strong effect on A $\beta$  fibrillization. ApoE complexes with A $\beta$  monomers and, by interacting with the low-density lipoprotein receptor (LDLR) and LDL receptor-related protein 1 (LRP1), transports A $\beta$  into the perivascular spaces around arterioles and venules for removal by the glymphatic pathway. Heparan sulfate proteoglycan (HSPG) also interacts with LRP1 and A $\beta$  and influences its oligomerization. Within the perivascular space, A $\beta$  can aggregate, which leads to cerebral amyloid angiopathy (CAA), which in turn can damage the vascular wall, leading to microhaemorrhages. Through the triggering receptor expressed on myeloid cells 2 (TREM2), lipoproteins, including ApoE, influence the phagocytic properties of microglia and might influence plaque removal. Adapted with permission from REF.<sup>80</sup>, Elsevier.

### Loss of synaptic homeostasis

Synaptic alterations are a central unifying theme<sup>53,91</sup> to understand the relationship between A $\beta$  and tau neurotoxicity, the morphological lesions of AD, and cognitive impairment. Synaptic loss is strongly correlated with cognition in patients with AD<sup>92,93</sup>. A $\beta$  plaques are surrounded by a ring of soluble oligomeric A $\beta$  and decreased synaptic content that extends for ~50  $\mu$ m, marked by both a loss of presynaptic and postsynaptic markers<sup>53,94</sup>; given the large number of cortical plaques in patients with AD, this amounts to a substantial number of lost synapses. Moreover, in animal models of plaque deposition in which there is little neuronal loss, an additional 25% loss of synaptic content in the neuropil between plaques can be observed<sup>53,94</sup>; it is likely that a similar phenomenon occurs in humans. These data suggest a strong interaction between the oligomeric A $\beta$  species thought to surround plaques and the neuropil and synaptic toxicity<sup>95</sup>. Tau-overexpressing transgenic animals have a similar loss of synapses, with tau

accumulation in presynaptic and postsynaptic sites<sup>96</sup>. These synaptic alterations seem to be synergistically amplified in mice when tau and A $\beta$  mutant transgenes are included in the model<sup>85</sup>. Patients with AD also have a marked loss of synapses closely associated in cross-sectional studies with the presence of neuronal loss, dendritic loss, loss of dendritic arborization and tangle formation<sup>93,97</sup>. Importantly, synaptic loss is not simply a part of healthy ageing in the absence of AD pathology in most people<sup>98</sup>; indeed, cross-sectional studies in human autopsy samples have suggested that synaptic loss can precede neurodegeneration in persons with symptomatic AD<sup>99,100</sup> and, in animal models, it is evident that synapse loss can precede tangle formation<sup>101</sup>.

In addition to a loss of synapses in AD, several studies in animal and laboratory models have suggested the involvement of synaptic dysfunction. In rodent transgenic A $\beta$  models, there is hyperactivity of calcium flux in and around plaques, which can be normalized by inhibiting the generation of A $\beta$  with BACE inhibitors<sup>102</sup>.



How this hyperactivity affects cognitively eloquent neural circuitry is unknown but it is assumed that altered synaptic homeostasis plays a role<sup>103,104</sup>. In mice with mutant tau transgenes, intracellular and extracellular recordings of neocortical pyramidal neurons show

alterations in firing rates and firing patterns, implying alterations in basic electrophysiological homeostasis due to the tauopathy<sup>105</sup>. When mice expressing human tau and Aβ were examined, there was a tau-dependent quieting of neural system activity in the parietal cortex

◀ Fig. 4 | **Consequences of the endosomal–lysosomal network and autophagy dysfunction in AD.** The endosomal–lysosomal pathway, consisting of early and late endosomes/multivesicular bodies and lysosomes, serves diverse functions in neurons relevant to Alzheimer disease (AD). In AD, the earliest changes seen in the brain are swelling of neuronal Rab5-endosomes, reflecting the hyper-activation of Rab5 (Rab5-GTP) by amyloid precursor protein (APP)- $\beta$ CTF or neuronal overexpression of Rab5. Increased Rab5 activation leads to endosome enlargement and increased endocytosis, which have several cellular consequences relevant for AD. For example, increased endocytosis of AMPA receptors (AMPA) leads to defects in synaptic plasticity and dendritic spine shrinkage and loss. In addition, abnormal growth factor/receptor-mediated signalling results in the downregulation of AKT-mediated pro-survival signalling and increased GSK-3 $\beta$ -mediated tau hyperphosphorylation (p-tau). Corresponding endosomal–lysosomal activities in astrocytes and microglia coordinate bi-directional trafficking of cargo into and out of cells to maintain them and support the clearance of extracellular material in partnership with autophagy. Autophagy encompasses several mechanisms of constituent delivery to lysosomes, including initial entry of the substrate into late endosomes/multivesicular bodies (macroautophagy), chaperone-mediated delivery directly to lysosomes, or macroautophagy, the major route depicted here. The increased induction of autophagy, a cellular stress response, becomes counter-productive as the functioning of autolysosomes and lysosomes is progressively corrupted due to multiple genetic and environmental factors. The result is a substantial build-up of autophagic vacuoles, mainly poorly acidified autolysosomes incompetent in clearing A $\beta$  and  $\beta$ CTF, causing a unique pattern of perikaryal membrane blebbing, trafficking deficits producing autophagic vacuole-filled swellings along axons (dystrophic neurites), and accelerated peri-nuclear A $\beta$  aggregation preceding advanced neuronal degeneration and disintegration, initiating senile plaque formation. An ensuing inflammatory response involving the recruitment of phagocytic microglia to compromised neurons/neurites and a release of damaging cytokines as the extracellular debris is being cleared increases bystander neurotoxicity, affecting neighbouring neurons and senile plaque expansion. LMP, lysosomal membrane permeabilization; LTD, long-term depression; LTP, long-term potentiation; ASC, Apoptosis-associated speck-like protein.

with or without neuronal loss<sup>106</sup>, which was normalized by the suppression of tau expression. In this study, tau suppression decreased the amount of soluble tau without affecting aggregated tau, implicating soluble tau in the pathophysiology of AD. Collectively, these data imply that the soluble forms of oligomeric A $\beta$  or of tau, rather than the aggregated forms, have the strongest effect on synaptic function.

Synaptic alterations have consequences on downstream neural circuit integrity. In animal models, a reactive synaptogenesis occurs in the hippocampus after loss of the entorhinal–hippocampal perforant pathway<sup>107</sup> and analogous alterations occur in the human hippocampus in AD<sup>108,109</sup>. Whether this synaptogenesis has functional benefit remains unclear. Synaptic alterations can have remote consequences elsewhere in the brain and are therefore a prime explanation for the unique topographical character of AD, which is discussed further below.

Synaptic activity is also a likely basis for the propagation of proteopathic seeds trans-synaptically. In AD, the secretion of tau from neurons has been suggested<sup>62</sup> and, as tau release is activity dependent, a synaptic mechanism is implied. Moreover, in animal models, tau propagates across synapses to create cytoplasmic deposits in the downstream neurons<sup>64,110</sup>, although it remains to be tested if these downstream neurons lose function. Synaptic breakdown may facilitate this trans-synaptic deposition of misfolded proteins as observed in an animal model of tau propagation<sup>64</sup>. In addition, as proteopathic seeds can be taken up at the synapse via LRP1 (REF. 111), which interacts with APP and ApoE<sup>112,113</sup>, competing

interactions with, for example, different ApoE isoforms or ApoE protein levels might affect tau propagation.

Synaptic remodelling is a ubiquitous process in the normal brain. Synapses can be tagged for removal, primarily by microglia, which are able to strip synapses from intact dendrites. Dysfunction in the activation of synaptic pruning mechanisms by microglia, mediated in part by complement proteins and ApoE, among other molecules, have been implicated in early AD<sup>114</sup>. The precise mechanism of this ‘tagging’ is unclear but altered clearance processes plausibly link synaptic dysfunction, innate immune mechanisms and the lysosomal, endosomal and autophagy mechanisms discussed below.

### Dysfunctional proteostasis

The clearance of damaged proteins is integral to maintaining synaptic homeostasis and the neuronal lysosome (FIG. 4) plays an important role in the aetiology of AD<sup>115–117</sup>. In the context of normal brain health, the endosomal–lysosomal network (ELN) and autophagy are involved in memory and cognition, with local autophagy activity at synapses modulating memory formation<sup>118,119</sup> and autophagy induction attenuating age-related memory decline<sup>119</sup>.

A $\beta$  and the  $\beta$ CTF peptide arising from the  $\beta$ -secretase cleavage of APP are generated mainly within endosomes, which are the first neuronal organelles known to exhibit AD-specific neuropathology<sup>120,121</sup>. Lysosomes are the principal sites for the clearance of intracellular A $\beta$  and  $\beta$ CTF<sup>117,122</sup>. In AD, A $\beta$  and  $\beta$ CTF accumulate abnormally in ELN compartments<sup>117</sup>. In induced pluripotent stem cell lines with APP and PSEN1 mutations, endosomal abnormalities occur that are correlated with  $\beta$ CTF but not with A $\beta$ <sup>123</sup>.  $\beta$ CTF induces the overactivation of Rab5, a GTPase, which causes several endosome morphological anomalies that occur in early AD<sup>117,124</sup> such as accelerated endocytosis, impaired transport of enlarged endosomes and other neurodegenerative processes<sup>117</sup>. In mouse AD models, elevated levels of Rab5 signalling due to  $\beta$ CTF elevations induce synaptic plasticity deficits, tau hyperphosphorylation and neurodegeneration<sup>117</sup>. The build-up of  $\beta$ CTF and oxidized substrates, including A $\beta$ , progressively impairs lysosome function and causes autophagy failure<sup>125</sup>.

Presenilins 1 and 2 are also preferentially localized within the ELN and presenilin 1 is essential for lysosome acidification. Loss-of-function mutations or deletion of PSEN1, independently of  $\gamma$ -secretase, prevent the normal assembly of the lysosomal v-ATPase complex, the proton pump responsible for acidification<sup>126</sup>, and impede the lysosomal delivery of ClC7, a chloride ion channel also essential for lysosomal acidification in mice and in human fibroblast cultures<sup>127</sup>. Lysosomal pH dysregulation can instigate broad functional derangements beyond proteostasis, including the effects on synaptic plasticity<sup>124</sup>, neurotransmitter exocytic release<sup>128,129</sup>, and synaptic vesicle fusion and recycling<sup>130</sup>. APOE  $\epsilon$ 4 carriage has allele-specific effects at every ELN level, from accelerating and accentuating endosome dysfunction<sup>120</sup> and impeding exosome release<sup>131</sup> to causing lysosomal expansion and lysosomal membrane permeabilization<sup>132</sup>.

Autophagy has several functions that are relevant for AD, primarily proteostasis but also homeostatic cell signalling, phagocytosis, innate immunity and synaptic function<sup>133,134</sup>. Macroautophagy is induced by nutrient or metabolic stress and recycles non-essential substrates for energy or selectively targets protein aggregates and damaged organelles<sup>134</sup>. The early induction of macroautophagy in AD<sup>135</sup> is neuroprotective against ageing-related and disease-related sources of oxidative stress<sup>136,137</sup>; however, continued high rates of delivery of oxidized or damaged cytoplasmic constituents, such as mitochondria, A $\beta$  and other APP products, to lysosomes later in disease overburdens an already compromised lysosomal system<sup>135</sup>, resulting in a substantial accumulation of waste in neurons<sup>138</sup>. Accordingly, dystrophic neurites become engorged with waste-filled autophagic vacuoles that contain high levels of APP,  $\beta$ -secretases and  $\gamma$ -secretases, and APP metabolites<sup>139</sup>. Although neurons can survive for years with neuritic dystrophy<sup>140</sup>, eventual autophagic vacuole accumulation in the perikarya leads to more rapid autophagy failure and neurodegeneration (FIG. 4). Lysosomal membrane-damaging events, induced by A $\beta$  and other oxidized substrates, trigger the death of neurons and microglia by lysosomal membrane permeabilization, which releases cathepsins that can activate cell death cascades<sup>141</sup>.

Microglia-expressed genes and genes involved in the complement pathway are risk genes for AD, implying the relevance of microglia and neuroinflammatory mechanisms in AD<sup>89</sup>. Activated microglia play a key role in AD pathogenesis and link synaptic life cycles and innate immunity to the ELN functions. Microglial lysosomal membrane permeabilization events underlie the brain's principal inflammatory response and the release of cytokines, particularly IL-1 $\beta$ , which is thought to exacerbate neurodegeneration in AD<sup>142,143</sup>. Cathepsin B released by lysosomal permeabilization events into the cytosol facilitates the assembly of the microglial NLRP3 inflammasome and activates caspase 1, which is responsible for the maturation and extracellular discharge of cytotoxic IL-1 $\beta$  that subsequently fuels brain inflammation<sup>144</sup>. The concept of an "autophagy-brake regulation" of inflammation reflects evidence that autophagy suppresses inflammasome activation and IL-1 $\beta$  release<sup>145</sup>, both of which are elevated when autophagy is impaired in AD and ageing<sup>146</sup>. The role of the microglial protein TREM2 in AD pathogenesis is complex and may differ at the various disease stages<sup>147,148</sup>. It might be expected that altered autophagy and ELN function would affect synaptic pruning<sup>149</sup> and therefore the integrity of normal synaptic connectivity but there is not a clear demonstration of the interrelationship of these two systems in human AD.

A $\beta$ , tau or other potentially toxic molecules released by dying cells or by aberrant exocytic mechanisms into the extracellular space are degraded by various proteases<sup>150</sup>, complementing clearance by microglia and astrocytes through endocytic uptake and lysosomal degradation. Molecular chaperones, such as the AD risk factor clusterin, facilitate this glial uptake. These clearance routes, in addition to the brain glymphatic system for the clearance of extracellular pathogenetic proteins

through the lymphatic system<sup>151</sup>, help protect against the transneuronal propagation of tau species.

### A $\beta$ , tau and cortical networks

Network connections have a defining role in the initial location of A $\beta$  deposits and may be responsible for the early location and progression of tauopathy through the brain. A central element of AD as a synaptic disorder is the remarkable regional specificity of A $\beta$  and tau accumulation and the extent to which clinical symptoms map on to the latter.

Traditional neuroanatomical investigations established the strong interconnectivity between the entorhinal cortex, the locus of initial cerebral neurofibrillary tangle deposition in AD, and association areas of the temporal, parietal and frontal isocortex<sup>70,71</sup>. Functional MRI replicated this connectivity in healthy humans and also demonstrated the dysfunction of these pathways in symptomatic AD. A $\beta$  deposition occurs in a network-specific pattern in regions comprising the default mode network (DMN)<sup>152,153</sup>, a group of areas that are active when the individual is not focused on the external environment and which includes the posterior cingulate gyrus and two subsystems (a medial frontal one and a medial temporal one)<sup>152</sup>. The association between A $\beta$  deposition and the DMN shows that A $\beta$  accumulates in brain regions with the highest synaptic activity (and, therefore, also regions with the greatest stress on the resident autophagy and ELN). The number of functional connections or the degree of 'hubness', which is another measure of synaptic load, is predictive of the amount of measured A $\beta$  in a brain region<sup>154</sup>.

Tauopathy occurs in networks other than the DMN that support specific cognitive domains and are impaired in symptomatic AD<sup>155</sup>, with clinical phenotype-specific changes in functional networks as measured with functional MRI<sup>156</sup> or FDG-PET<sup>157</sup>. Regions that are connected to loci with a high tau abundance are more likely to experience an increase in tau accumulation<sup>158,159</sup>. The major patterns of tau deposition observed with tau-PET show a spatial correspondence to connectivity patterns with variation by clinical phenotypes (see Clinical diagnosis)<sup>160</sup>. Of note, in contrast to tau, there is no evidence of significant phenotypic variance in this macroscopic A $\beta$  pattern<sup>161</sup>.

The functional activity of the connectome could selectively alter synaptic homeostasis in a way that offers a plausible account for the co-occurrence of APP/A $\beta$  and tau pathology in AD. In persons without elevated A $\beta$  assessed using PET, those who eventually develop elevated A $\beta$  had DMN hyperconnectivity and increased glucose uptake compared with those who did not later develop increased A $\beta$ <sup>162</sup>. The loss of homeostasis in areas of high synaptic activity in the DMN could induce dysfunction as well as the loss of homeostasis in remote but connected brain regions that depend on the DMN for proper functioning (such as the medial temporal lobe), a so-called cascading network failure<sup>160</sup>. One such region of synaptic dysfunction and early A $\beta$  accumulation, the posterior cingulate cortex, is strongly connected to the medial temporal lobe<sup>163</sup>. The downstream synaptic stress, which is indexed by A $\beta$  accumulation in



the posterior cingulate<sup>154</sup>, is a plausible account of the propensity of the medial temporal lobes to accumulate tau when it loses functional support from the DMN (Supplementary Figure 1). Over a timeframe exceeding a decade or longer, synaptic dysfunction that leads to A $\beta$  accumulation in the DMN could accelerate tauopathy in strongly linked functional modules<sup>159,164</sup>. Subsequently, the transition from no symptoms to dementia in AD more closely fit with pathological tau expansion from the medial temporal lobe to functionally connected isocortical regions.

## Diagnosis, screening and prevention

### Clinical manifestations

The severity of cognitive impairment caused by AD ranges from no cognitive impairment to dementia, which includes subjective cognitive impairment and MCI (FIG. 5). The principal cognitive domains that are affected in AD are memory, language, visuospatial function, and executive function and one or more cognitive domains may be affected at any severity of cognitive impairment. The clinical presentations of persons with AD pathology are further modified by the co-presence of non-AD pathologies.

The prototypical patient with AD is one with amnesic MCI progressing to variable degrees of impairment in language, spatial cognition, executive function or working memory that interfere with daily functioning (that is, multidomain dementia). Amnesic presentations are most common with later age of onset (>70 years) while non-amnesic presentations are common in younger persons. The initial appearance and progression of cognitive deficits in typical AD MCI and dementia follow the spread of tauopathy from the medial temporal lobe to the lateral temporal, parietal and frontal isocortex<sup>44,70,71</sup>. Neuropsychiatric symptoms often co-occur with cognitive deficits, of which depression, anxiety and social withdrawal may be most evident in mild dementia whereas delusions, hallucinations, emotional dyscontrol

or physically aggressive behaviours may be observed in more advanced stages<sup>165</sup>.

AD can also manifest in its earliest symptomatic form with non-amnesic deficits<sup>77,166</sup>. A common non-amnesic AD clinical presentation — known as posterior cortical atrophy or the visual variant of AD — encompasses prominent visuospatial difficulties, including challenges in reading, face recognition or difficulties processing complex visual scenes<sup>167</sup>. The logopenic form of primary progressive aphasia is another non-amnesic form of AD<sup>168</sup>, which typically manifests as a non-fluent aphasia with prominent word-finding pauses, naming and repetition difficulties; approximately 60% of these persons will have underlying AD<sup>169</sup>. In addition, a dysexecutive presentation of AD is being recognized more frequently particularly in younger patients<sup>170</sup>. These patients have challenges in executive function, multi-tasking, decision-making and behavioural changes with preserved memory function<sup>157</sup>. The non-amnesic syndromes of AD are more common in persons aged <70 years although the underlying reasons for this observation are unknown. Both the amnesic and non-amnesic presentations of AD have A $\beta$  deposition throughout the brain but have syndrome-specific distributions of tauopathy<sup>78,171</sup>.

### Clinical diagnosis

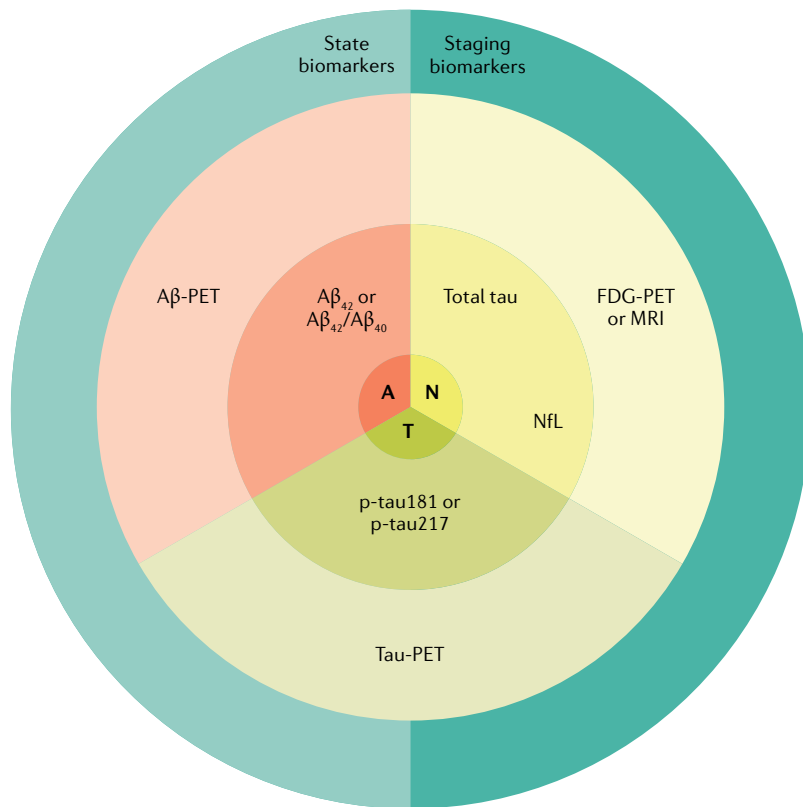
#### Diagnosis in individuals with cognitive complaints.

Clinical diagnosis in the setting where a patient, family member or health professional raises concerns about cognitive decline or dysfunction in the patient is of paramount importance in the overall care of persons with cognitive impairment. Although the level of awareness of dementia has greatly improved in the primary care and specialist communities, heightened awareness of the early signs of cognitive impairment in the clinical setting is still needed.

The diagnostic process begins with a determination of the presence and severity of cognitive impairment.

Clinical continuum	CN	MCI	Dementia
NIA-AA 2011	Preclinical	MCI	Dementia
IWG	Asymptomatic at risk	Prodromal AD	Dementia
DSM-5		Mild NCD	Major NCD
NIA-AA syndromes	CU	MCI	Dementia
NIA-AA stages 2018	ST1	ST2	ST3, ST4, ST5, ST6

**Fig. 5 | Terminologies for characterizing cognitive impairment.** Several different terminology schemes can be used to classify the severity of cognitive impairment from cognitively normal (CN) to dementia. The Diagnostic and Statistical Manual of Mental Disorders (DSM-5)<sup>281</sup> uses the terms Mild Neurocognitive Disorder (NCD) and Major NCD to describe symptomatic states. The National Institute of Ageing – Alzheimer’s Association (NIA-AA) Alzheimer disease (AD) framework uses clinical syndromes and defines a six-stage scheme for individuals who have abnormal  $\beta$ -amyloid biomarkers (ST1–ST6)<sup>180</sup>. In the NIA-AA scheme, mild cognitive impairment (MCI) encompasses both stages 2 and 3. The NIA-AA continuum<sup>3,183,282</sup> has evolved slightly at the boundary between cognitively unimpaired (CU) and MCI. The International Work Group (IWG) labels were retrieved from REF.<sup>283</sup>. The terms CN and CU are equivalent, but the latter is preferred because CU better reflects its definition as the absence of cognitive impairment.



**Fig. 6 | Conceptualizing the A-T-N scheme.** Cerebrospinal fluid and PET imaging biomarkers can be grouped into those that proxy amyloid- $\beta$  ( $A\beta$ ; “A”), abnormal tau protein (“T”) or neurodegeneration (“N”). The A biomarkers derived from PET and cerebrospinal fluid (CSF) have an inverse relationship such that higher  $A\beta$ -PET corresponds to lower levels of CSF  $A\beta$ . The “T” biomarkers derived from PET and CSF are both abnormal at higher values. Quantitatively, tau-PET provides both a measure of regional tau abundance and distribution, whereas CSF p-tau181 or p-tau217 offer only a metric of normal or abnormal tau levels. The “N” markers, by virtue of their lack of specificity to Alzheimer disease (AD) and their heterogeneous underlying biologies, are generally not well correlated with one another. Biomarkers for AD can indicate whether a person is in the AD spectrum (state biomarkers) that include  $A\beta$  abnormalities and elevated tau biomarkers. Biomarkers can also be used to indicate the severity of the AD process (stage biomarkers) that include tau-PET and the neurodegeneration biomarkers. NFL, neurofilament light chain.

Information from an individual who is familiar with the patient’s daily life and the completion of a cognitive evaluation of the patient (a mental status examination) by a skilled clinician are the cornerstones of diagnosis. Neuropsychological testing can be beneficial to determine the severity of cognitive impairment in mild or high-functioning patients and can identify the involved cognitive domains, which can help the clinician with prognostication and with considerations about the underlying aetiology. This tentative diagnosis can then be confirmed with biomarkers. Although technology can assist in formulating a diagnosis, diagnosis rests on the skill of the clinician in integrating information from the informant, the mental status examination, the neurological examination and the technology. If cognitive impairment is diagnosed, a provisional determination of aetiology is made based on information from the history, the informant, the mental status examination (supplemented by neuropsychological testing in some circumstances) and the rest of the neurological examination.

AD is not the only cause of MCI (FIG. 1). Any neurodegenerative or cerebrovascular aetiology could initially lead to MCI and mild overt symptomatic cognitive impairment could be due to depression, medication misuse or obstructive sleep apnoea. In persons with MCI or dementia, screening for hypothyroidism, B12 deficiency and structural brain lesions, such as neoplasms or subdural hematomas, should be performed, even though the yield of clinically relevant abnormalities is low<sup>172</sup>. Once persons reach the dementia stage, reversible conditions are very unlikely but a number of non-AD conditions<sup>173</sup> have clinical phenotypes that overlap with AD such as Lewy body disease<sup>174</sup>, frontotemporal degenerations<sup>175,176</sup> and hippocampal sclerosis<sup>177</sup>. Thus, the consideration of alternative aetiologies should occur during the diagnostic evaluation of persons with MCI or dementia in whom AD is suspected. Features of the clinical presentation are the initial clue that a non-AD process may be present.

**Screening in those with no cognitive complaints.** Screening for objective evidence of cognitive impairment in the absence of cognitive complaints is not recommended. This topic has been quite controversial<sup>178</sup>. The United States Preventive Services Task Force has repeatedly indicated that there are insufficient data on improved patient outcomes to recommend the utility of cognitive screening<sup>179</sup>. One problem with screening is that the cognitive assessments used for screening lack precision, especially for the detection of milder cognitive impairment<sup>179</sup>. However, in support of screening, the recognition of cognitive limitations in patients by health-care practitioners, even in the absence of cognitive complaints, may be informative as unacknowledged cognitive impairment may have dramatic effects on the adherence to recommended medical interventions or other healthy living activities. Should disease-modifying therapies for AD become available, screening will take on increasing importance despite the challenges in designing studies to address screening<sup>178</sup>.

### Biomarkers

AD-specific antemortem biomarkers used in the context of careful clinical characterization has helped to establish levels of certainty for an AD pathology that was impossible when the only means of verification of the underlying pathology was at autopsy. In addition, the use of these biomarkers has enhanced our knowledge of AD. Combining amyloid and tau biomarkers with non-specific biomarkers of neurodegeneration was at the core of the research framework for AD proposed in 2018 (REF.<sup>180</sup>). The A-T-N approach is intended to classify individuals in the AD spectrum (FIG. 6). Diagnostic algorithms are being developed to provide recommendations on the most meaningful combination and to order these biomarkers according to the specific clinical situation<sup>181</sup>.

**Imaging biomarkers.** CT, FDG-PET and MRI were the first imaging modalities used to evaluate patients with cognitive impairment but their lack of specificity or sensitivity for AD was difficult to integrate into a conceptual model of AD. The introduction of  $A\beta$ -PET imaging in 2004 (REF.<sup>182</sup>) clarified the roles of FDG-PET and MRI as

markers of neurodegeneration, whereas CT was superseded by MRI for research purposes. The 2011 National Institute of Ageing – Alzheimer’s Association criteria<sup>183</sup> introduced a diagnostic model using amyloid and neurodegeneration biomarker profiles to characterize the relationship with AD in individuals across the cognitive spectrum.

Structural MRI or CT are necessary in the initial evaluation of a person with suspected cognitive impairment. MRI is often used as a first step to exclude other causes of cognitive impairment and it also allows the assessment of macroscopic brain atrophy as a reflection of tissue loss. Of note, individuals with cognitive impairment and increased A $\beta$  by PET experience accelerated regional atrophy in the temporal and parietal isocortex compared with those without elevated A $\beta$ , with larger volume losses correlating with advancing cognitive impairment<sup>184</sup>. Hippocampal atrophy observed with MRI is associated with AD but it can also occur in individuals with cognitive impairment caused by hippocampal sclerosis, frontotemporal lobar degeneration or cerebrovascular disease as well as in persons without cognitive impairment<sup>185</sup>. In younger persons with AD dementia, hippocampal sparing is common<sup>171,186</sup>. Structural imaging may be used to support a diagnosis of posterior cortical atrophy variant of AD, the most common of the younger-onset, hippocampal-sparing AD variants. Although there is a global reduction in brain volume in AD owing to the loss of synapses, dendrites and neuronal cell bodies<sup>187</sup>, global brain volume loss is not diagnostically useful because it is not specific for AD.

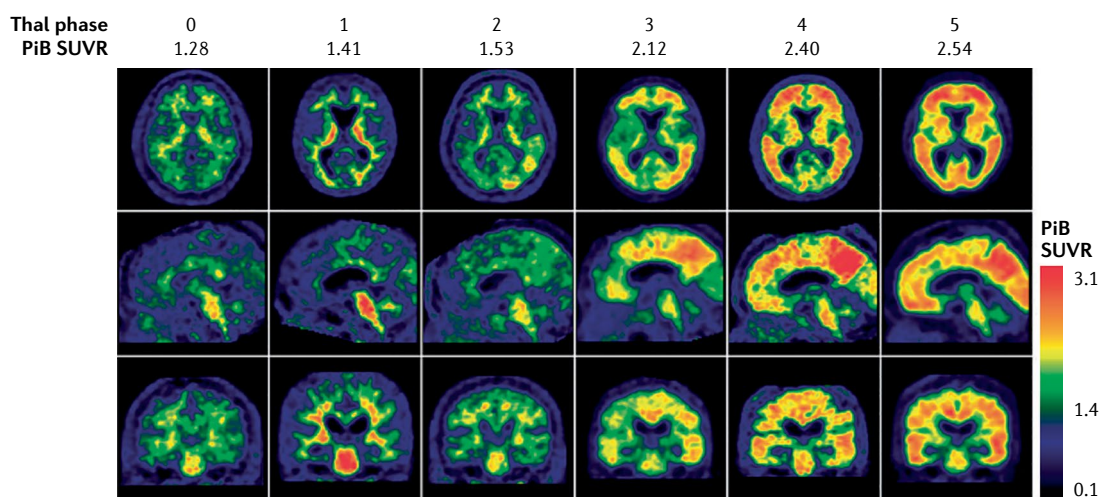
Structural MRI is also useful to assess patients for cerebral microbleeds that occur as a consequence of cerebral amyloid angiopathy<sup>188</sup>. Cerebral microbleeds are common in the elderly; in a population-based study, 39% of persons without dementia over the age of 80 years had at least one cerebral microbleed and the burden of cerebral microbleeds was correlated with A $\beta$ -PET levels<sup>189</sup>.

The impact of cerebral microbleeds on cognition is modest<sup>190</sup> but difficult to disentangle from the role of the underlying AD pathology.

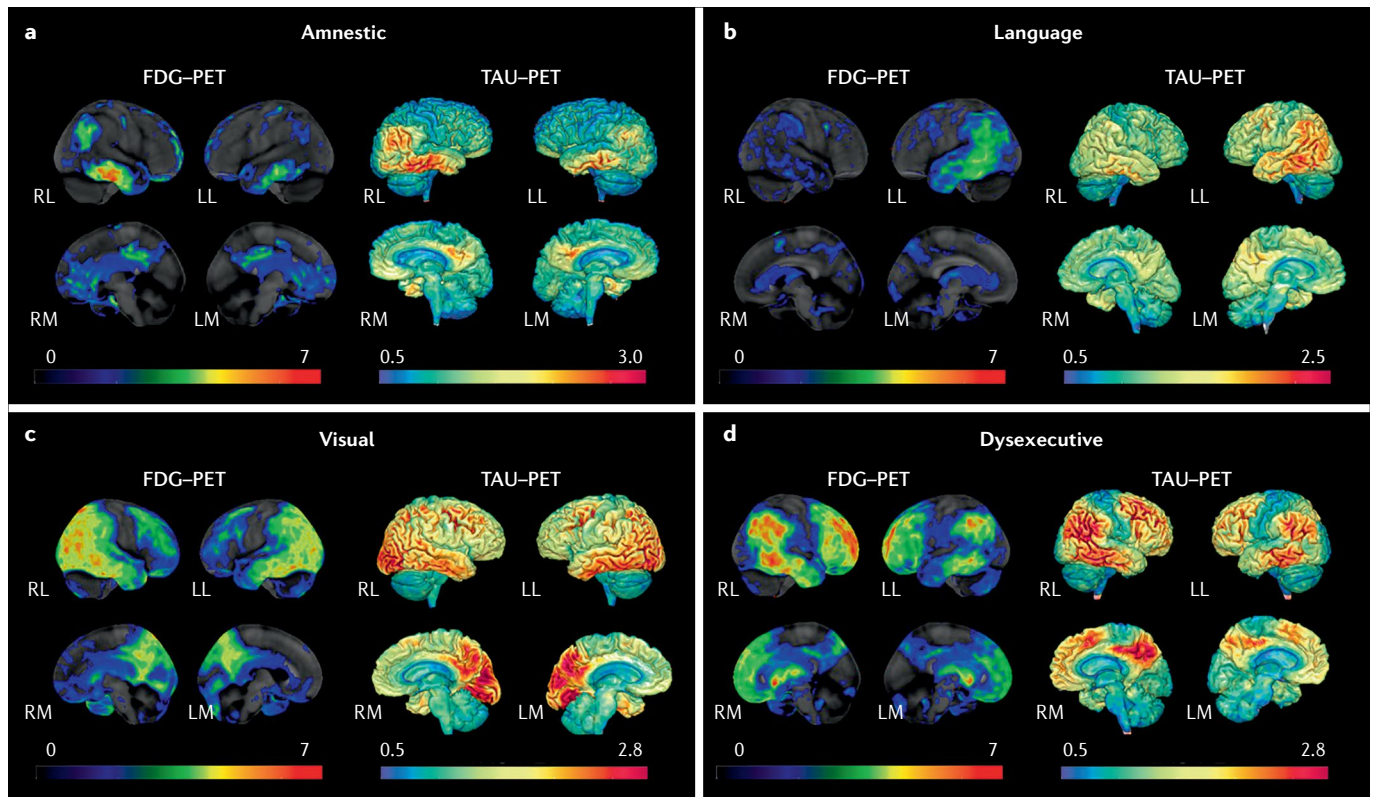
FDG-PET has revealed a pattern of temporal-parietal and hippocampal hypometabolism that precedes volume loss in the same regions and is highly characteristic of AD<sup>191</sup>. FDG-PET could be particularly useful after A $\beta$ -PET imaging in those with elevated A $\beta$  for staging, short-term prediction, to differentiate between AD variants and in persons without elevated A $\beta$  on PET scans for the diagnosis of non-AD disorders<sup>192,193</sup>. The degree and regional extent of hypometabolism measured by FDG-PET roughly correlates with the overall severity of cognitive impairment in AD, supporting the use of clinical severity as a proxy of AD pathology.

The development of A $\beta$ -PET markers that allow the direct visualization of A $\beta$  plaque accumulation has increased the precision of AD diagnosis and has enabled a real-time view of the evolution of  $\beta$ -amyloidosis over time. Many different A $\beta$ -PET tracers have been developed<sup>194</sup> and they have been validated against neuropathology<sup>195,196</sup> (FIG. 7). Three tracers — florbetapir, florbetaben or flutemetamol — have received FDA and EMA approval and are commercially available. In addition, the <sup>11</sup>C tracer Pittsburgh compound B has been widely used in research settings. All these tracers measure fibrillar A $\beta$  deposits and give very similar results in clinical practice<sup>191,194</sup>. International efforts led to the development of a standardized procedure and a common ‘Centiloid’ scale for A $\beta$ -PET tracers<sup>197</sup>. A $\beta$ -PET and CSF A $\beta_{42}$  are closely but inversely correlated<sup>198,199</sup>. Changes in CSF A $\beta_{42}$  may precede elevations in A $\beta$ -PET, perhaps because PET cannot detect A $\beta$  species such as oligomers or diffuse plaque A $\beta$ .

Quantitative A $\beta$ -PET imaging provides evidence on the extent and location of amyloid deposition, which is its main advantage over CSF-A $\beta$  biomarkers. Although the pattern observed on A $\beta$ -PET does not differ across



**Fig. 7 | A $\beta$ -PET scans closely approximate neuropathology.** Findings from antemortem <sup>11</sup>C Pittsburgh Compound B (PiB) scans showing different standardized uptake value ratios (SUVR) of a global region of interest on the last scan prior to death are similar to findings from post-mortem-derived amyloid- $\beta$  (A $\beta$ ) burden as rated on the ‘Thal phase’. The Thal A $\beta$  staging system<sup>284</sup> is a sequence of five levels of A $\beta$  accumulation that reflect the expanding territory occupied by A $\beta$  plaques. The relevant PiB signal is on the cortical surface, whereas binding in the subcortical white matter and brainstem represents the non-specific binding of the tracer. Adapted with permission from REF.<sup>196</sup>, Oxford University Press.



**Fig. 8 | Tau-PET and FDG-PET patterns in different clinical syndromes in persons with high  $\beta$ -amyloid-PET.** **a** | Typical amnestic-predominant Alzheimer disease with temporoparietal hypometabolism and tauopathy. **b** | Language syndrome (also known as logopenic variant primary progressive aphasia) with a highly asymmetric pattern in which hypometabolism and tauopathy are highly left hemisphere predominant. **c** | Visual syndrome (also known as posterior cortical atrophy) with a pattern of hypometabolism and tauopathy that is posterior temporal, parietal and occipital lobar in distribution. **d** | Dysexecutive syndrome with temporal, parietal and prominent frontal hypometabolism and tauopathy. Red colour on FDG-PET indicates greater hypometabolism, whereas red colour on tau-PET indicates a higher intensity of tracer retention. LL, left lateral; LM, left medial; RL, right lateral; RM, right medial.

AD subtypes or clinical phenotypes<sup>161</sup>, it allows the staging and monitoring of  $A\beta$  accumulation and the detection of  $A\beta$  in the earliest stages of AD<sup>200</sup>. Longitudinal  $A\beta$ -PET studies demonstrate a very low rate of accumulation of  $A\beta$ , with a lag time of 10–20 years between initiation of accumulation and symptomatic cognitive impairment and a deceleration of  $A\beta$  accumulation coinciding with the onset of symptomatic disease<sup>201</sup>. Approximately 20% of persons at 65 years of age and nearly 60% at 85 years have elevated brain  $A\beta$  but are cognitively normal<sup>202</sup>. This demonstrates both the strong effect of age on brain  $A\beta$  accumulation and the lack of clinical consequences of elevated  $A\beta$  until something else happens, namely the expansion of tauopathy outside of the medial temporal lobe.

Appropriate use criteria have been developed to identify patients most likely to benefit from  $A\beta$ -PET for diagnosis<sup>203</sup>.  $A\beta$ -PET imaging is not necessary for many patients with clinically diagnosed dementia due to AD; however, there is evidence for clinical utility in some symptomatic individuals not fulfilling these criteria<sup>204,205</sup>. With the introduction of tau-PET into clinical research, the  $A\beta$ -PET appropriate use criteria need to be revised along with the development of similar criteria for tau-PET.

Several tau-PET ligands have been developed, of which <sup>18</sup>F-flortaucipir has been approved by the FDA. Second-generation tracers with an improved signal-to-noise ratio as well as less off-target and lower non-specific binding are available for research purposes<sup>206–208</sup>. Tau-PET imaging allows the detection of tauopathy that is largely, though not entirely, specific for AD<sup>209</sup>. The tau-PET binding topography strongly correlates with cognitive performance<sup>210</sup> and its regional patterns map onto the different AD clinical phenotypes<sup>77,78</sup> (FIG. 8). There is a close correspondence between the regional accumulation of a tau-PET tracer and FDG hypometabolism. Tau-PET abnormalities are highly predictive of subsequent cognitive decline in both asymptomatic and symptomatic individuals<sup>211–213</sup> and sensitive to the regional extension of tauopathy over time<sup>158</sup>. Whereas  $A\beta$  begins to accumulate 10–20 years prior to cognitive symptoms and then shows a reduced rate of accumulation around the time of symptom onset<sup>201</sup>, tau accumulates in the temporal and parietal isocortex at a time much more proximate to cognitive impairment and continues to accumulate in parallel with disease progression<sup>77,214,215</sup>. It is very uncommon to encounter a patient with substantial tau accumulation outside of the medial temporal lobe who does not have cognitive impairment<sup>209</sup>.

**CSF biomarkers.** The most validated and widely accepted CSF biomarkers for AD are decreases in  $A\beta_{42}$  (or  $A\beta_{42}$  normalized to  $A\beta_{40}$  or total tau (t-tau)) and increases in phosphorylated tau (p-tau181). These biomarkers are recognized by research guidelines<sup>216</sup> for their diagnostic utility<sup>217</sup> and are used clinically in many European countries and the USA. Collaborative efforts over the last few years have sought to advance standardization and to improve the technology for CSF analysis<sup>218</sup>.

$A\beta_{42}$  is reduced in CSF in individuals with symptomatic AD of any severity and in asymptomatic persons who later develop symptoms. However, there is individual variability in  $A\beta_{42}$  levels in CSF and normalization using CSF  $A\beta_{40}$  or p-tau levels has shown better diagnostic performance compared with  $A\beta_{42}$  alone<sup>219,220</sup>.

In the A-T-N scheme, p-tau181 is considered a specific biomarker for tau pathology, whereas t-tau is considered a general marker of neurodegeneration. Both p-tau181 and t-tau are typically increased in MCI and dementia due to AD<sup>221</sup>. Both CSF p-tau181 and t-tau are of little value in the staging of disease severity<sup>222</sup>. Neuropathological studies have shown that p-tau181 correlates only moderately with neurofibrillary tangles<sup>223,224</sup>. p-Tau181 strongly correlates with t-tau in CSF and is markedly increased in AD but not in most other neurodegenerative diseases<sup>222</sup>, supporting the use of p-tau181 as an AD-specific biomarker. p-Tau217 has recently been proposed as a more sensitive alternative to p-tau181 (REFS<sup>225,226</sup>); p-tau217 is not yet available for clinical practice.

New CSF biomarkers need to be incorporated into a diagnostic or prognostic framework for AD. CSF neurofilament light chain<sup>227</sup> will likely emerge as an accepted biomarker for neurodegeneration of diverse aetiologies, and other CSF biomarkers<sup>228</sup> on the verge of acceptance include neurogranin<sup>229</sup>, synaptosome-associated protein 25 (SNAP25) and synaptotagmin 1 (SYT1), although their specificities for AD are yet to be established. Biomarkers for non-AD processes, such as cerebrovascular pathology,  $\alpha$ -synuclein and TDP43, will also be of value in establishing diagnostic frameworks for other neurodegenerative disorders and in recognizing co-occurrence in persons with abnormal AD biomarkers.

**Blood-based biomarkers.** Blood-based biomarkers for AD are rapidly expanding, although effect sizes and other statistics to distinguish AD or MCI from controls are lower than those for CSF biomarkers (<https://www.alzforum.org/alzbiomarker>) and more studies are needed to fully understand the links with more validated CSF and PET biomarkers. The development of blood-based biomarkers for  $A\beta_{42}$  (REF.<sup>230</sup>), p-tau181 (REF.<sup>231</sup>), p-tau217 (REF.<sup>232</sup>) and neurofilament light chain<sup>233</sup> will greatly expand the capability with which AD as an aetiology can be included or excluded. One blood-based assay assessing the  $A\beta_{42}/A\beta_{40}$  ratio was approved in the USA and in the European Union in 2020 based on a mass spectroscopy assay. This assay closely correlates with  $A\beta$ -PET status, with an area under the curve value of 0.88 (95% CI 0.82–0.93)<sup>230</sup>. Blood-based biomarkers should still be considered as candidate screening tools and not as diagnostic biomarkers<sup>234</sup>.

### Prognosis and rate of progression

Both routine clinical practice and clinical trial experience has shown that the rate of cognitive progression in persons with AD is highly variable<sup>235</sup>. Variability in the rate of progression may be due to the biology of AD<sup>65</sup>, the involvement of non-AD pathologies<sup>8</sup> or the presence of comorbidities. Age may not be particularly relevant after accounting for comorbidities and life expectancy<sup>235</sup>. In general, patients with milder degrees of cognitive impairment experience a more gradual decline than those with more advanced impairment<sup>236</sup> but, once the severe stages are reached, an apparent plateau may occur.

Although persons with subjective cognitive complaints without objective evidence of cognitive decline have a highly variable prognosis, having subjective cognitive complaints approximately doubles the risk of developing MCI<sup>237,238</sup>. In one study with long-term follow-up, the transition from subjective memory complaint to MCI took an average of 9.4 years<sup>238</sup>. In addition, subjective cognitive complaints are associated with higher burdens of imaging changes such as elevated  $A\beta$  on PET or hippocampal atrophy associated with AD<sup>239,240</sup>. Similar to subjective cognitive impairment, clinically diagnosed MCI is associated with a substantially higher risk for progression to dementia than no cognitive impairment within 2 years<sup>24</sup>. Of note, the risk of progression of MCI is highly variable, even in the more rigorous clinical trial setting<sup>241</sup>. Some of the risk is predicted by the presence or absence of abnormal AD biomarkers.

Individuals with abnormal  $A\beta$  biomarkers who are either cognitively unimpaired or who have MCI<sup>242,243</sup> are at increased risk for cognitive decline compared with persons with normal  $A\beta$  biomarker levels, especially if they also have an abnormal neurodegeneration biomarker, an abnormal tau-PET biomarker<sup>244,245</sup> or elevated CSF tau levels<sup>243,246</sup>. For example, 6 years after a CSF profile with both abnormal  $A\beta$  and tau, ~80% of cognitively normal individuals had developed MCI or dementia (HR 33.8; 95% CI 6.1–187)<sup>246</sup>. In individuals with MCI, those with elevated  $A\beta$  by PET have an increased risk of progression to dementia (HR 2.6; 95% CI 1.3–5.3)<sup>242</sup>. *APOE* genotypes are also associated with the risk of progression, either slowing in those with the *APOE*  $\epsilon 2$  allele<sup>247</sup> or accelerating in those with the *APOE*  $\epsilon 4$  allele<sup>248</sup>. In individuals with dominantly inherited AD, CSF tau species at different phosphorylation states are associated with different stages of disease<sup>225</sup>.

### Prevention

Although there are no proved pharmacological nor non-pharmacological<sup>249–252</sup> approaches for the prevention of cognitive impairment due to AD, there are grounds for optimism that multidimensional interventions that involve exercise, lifestyle changes and cognitive stimulation<sup>253</sup>, combined with focused attention on other modifiable behaviours or conditions, might delay the onset of overt cognitive impairment. Lifestyle and medical strategies, if instituted at least by midlife, may reduce the burden of cerebrovascular disease-related brain injury<sup>254</sup>. A trial of aggressive blood pressure reduction in persons who were thought

to be cognitively unimpaired at enrolment across the age range of 50 years and older (including 28% who were over the age of 75 years) resulted in a lower rate of incident MCI and dementia, although the safety of targeting a systolic blood pressure of 120 mmHg in older persons is debated<sup>255</sup>. A reduction in the total burden of brain disease of any aetiology in cognitively eloquent brain regions would increase the amount of AD-related pathology needed to produce symptoms and, through that indirect mechanism, delay symptomatic disease due to AD.

### Management

The majority of care and management of patients with MCI and dementia due to AD (as well as most all-cause MCI and dementia) occurs in the outpatient setting whilst patients are still living in the community. Management begins from the first moment of a clinician's interaction with patients and their families. Much of the burden of the disease falls on family caregivers. For most families, having a family member with cognitive impairment is a novel experience. Compassion, patience and a lack of condescension are critical to establishing rapport, trust and realistic expectations. For many, explicit training in this new role may be helpful. Supporting caregivers is a major mission of the Alzheimer's Association in the USA and its sister organizations in other countries. As there are many uncertainties on how best to deliver caregiver support, there are ongoing pragmatic trials of the best way to deliver formal care for patients with dementia<sup>256</sup>.

Acknowledgements of the diagnosis on the part of the family is a critical step before more sophisticated treatment interventions can be introduced. Many patients with MCI or dementia due to AD have a profound loss of insight into their own deficits and limitations. The brunt of the diagnostic disclosure may fall on the family caregiver, usually a spouse, adult child or a sibling. As each patient and their family caregivers differ in levels of sophistication and in emotional preparedness, the disclosure of the diagnosis must be tailored to the situation<sup>257</sup>. The introduction of biomarkers into the diagnostic process has made the delivery of the diagnosis of MCI or dementia more challenging<sup>258</sup> because distinctions between syndromes and aetiologies become more complex and may be unfamiliar to laypersons.

Patients with MCI to moderate dementia due to AD should be encouraged to be as socially, mentally and physically active and engaged as possible. As diet has not been shown to affect the course of symptomatic cognitive impairment in AD, eating a 'heart-healthy' diet can be encouraged without specific recommendations for foods to eat or to avoid. In addition, rather than systematic group interventions like cognitive stimulation, individualized interventions should be preferred as they may delay institutionalization<sup>259</sup>.

### Treatments for comorbidities

Many patients with cognitive impairment due to AD have comorbidities that can exacerbate cognitive dysfunction and worsen the performance of daily activities; of note, many comorbidities may not be clinically

recognized. Patients with concomitant depression or anxiety may benefit from the use of pharmacological interventions. Treating depression and anxiety in persons with MCI or dementia due to AD differs from the treatment of the general population as drugs with an anti-cholinergic pharmacology should be avoided and lower doses of psychoactive drugs should be used. Optimizing medication regimens should include minimizing other psychoactive medications unless clearly indicated. For example, avoiding medications that induce alterations in gait and balance is a paramount consideration. Antidepressants such as citalopram or sertraline may be effective for both anxiety and depression and can be used safely in patients with cognitive impairment.

Comorbid sleep disorders, such as obstructive sleep apnoea, should be treated using oral appliances or nasal devices that create expiratory positive airway pressure; patients with dementia may have difficulty adapting to sleeping with a mask. Hearing loss is common in patients with AD and can exacerbate short-term memory problems. Hearing loss represents a management challenge in persons with MCI or dementia because the small and expensive hearing aids require careful adjustments that may be challenging for patients. Misplacing and losing the devices is what usually terminates attempts to employ hearing aids in persons with cognitive impairment. In addition, visual loss in persons with cognitive impairment, except in persons with the posterior cortical atrophy syndrome, represents an unrelated but confounding disability, the management of which is made more difficult by the impaired memory and judgment of persons with dementia.

Comorbid gait and balance disorders in persons with presumed AD should raise questions about alternative diagnoses such as Lewy body disease, normal pressure hydrocephalus or cerebrovascular disease. However, gait and balance disorders in older persons can occur due to orthopaedic or neurological diseases that are unrelated to the cognitive disorder such as peripheral neuropathy or spine disease. As with sensory losses, the compounding effects of a gait and balance disorder and impaired memory and judgment present vexing management challenges for which common-sense interventions offer benefit<sup>260</sup>.

The treatment of pain in persons with cognitive impairment is challenging owing to the difficulties that persons with dementia have in describing their pain. Further, as many potent analgesic agents may cause sedation or reduced attentional abilities, there are substantial limitations on the use of medications beyond acetaminophen and NSAIDs. In patients with more than moderate dementia, a pain condition may present with agitation and irritability, whilst the cause of the pain remains covert.

### Pharmacological approaches for AD

Pharmacological approaches that are specific to AD are limited to three cholinesterase inhibitors (donepezil, rivastigmine and galantamine) and the NMDA receptor antagonist memantine. The cholinesterase inhibitors are approved in the USA and Europe for mild to

moderate dementia due to AD and are not approved for persons with MCI; donepezil is also approved for severe dementia only in the USA. In clinical trials, these drugs have consistently shown modest benefits in providing a delay in symptom progression by 6 months or slightly longer<sup>250,261</sup>. The adverse effects of the cholinesterase inhibitors include nausea, vomiting, loose stools or loss of appetite in a minority of individuals and, less commonly, muscle cramps, headaches and unpleasant dreams. Memantine is approved in the USA only for moderate to severe dementia due to AD; its effects are also rather modest<sup>250</sup>. The adverse effects of memantine are minor. Neither the cholinesterase inhibitors or memantine have any relevant effects on the underlying biology of AD.

Up until 2020, clinical trials of anti-A $\beta$  agents of a variety of different mechanisms had failed to produce any benefits<sup>262</sup> (BOX 1). One drug, aducanumab (a monoclonal antibody that targets A $\beta$  protofibrils), is being considered by the FDA and the EMA for AD based on the results of two phase III clinical trials<sup>263</sup>. Claims of efficacy for aducanumab were made based on a slowing of decline on the Clinical Dementia Rating scale but are complicated because the trials were terminated prematurely for futility; however, additional data review found evidence supporting an efficacy claim. Donanemab<sup>264</sup>, which targets plaque A $\beta$ , reported both a lowering of aggregated A $\beta$  and a reduction in the rate of cognitive and functional decline in a phase II study; a larger phase III trial (NCT#04437511) is under way. Another monoclonal antibody, lecanemab<sup>265</sup> (which targets A $\beta$  oligomer protofibrils) is also in late-stage trials (NCT#03887455). Several other therapies are in various stages of clinical development such as drugs directed against tau accumulation or spread in later-phase development<sup>266</sup>. Two secondary prevention studies for AD are ongoing, both with passive A $\beta$  immunization; neither the API study<sup>267</sup> nor the A4 study<sup>268</sup> will report results until at least 2022.

#### Box 1 | Anti-A $\beta$ antibody agents: future role still uncertain

The status of amyloid- $\beta$  (A $\beta$ )-lowering agents as therapies for AD has been a matter of vigorous debate for several years as a result of repeated failures. In 2019, the drug aducanumab gained attention due to the claims of its sponsor that, in at least one of its two pivotal trials, benefits were seen<sup>263</sup>. As of this writing, the regulatory status of aducanumab has not been clarified. If one were to focus on the one trial that showed benefits on the Clinical Dementia Rating Scale, it was the degree of A $\beta$  lowering and the target of the drug that led to success. On the other hand, if one were to view the two studies together and draw the conclusion that there were minimal to no clinical benefits from high-dose aducanumab, then one could conclude the opposite. That is, neither targeting oligomeric/protofibrillar A $\beta$  nor the degree of A $\beta$  lowering were sufficient. Into this contentious debate, the report that the drug donanemab demonstrated significant reductions in the rate of decline on a combined cognitive and functional scale<sup>264</sup> has added to the complexity of the determination of the clinical benefit of anti-A $\beta$  therapies. In contrast to aducanumab, donanemab targeted aggregated A $\beta$  species found in plaques. In addition, while aducanumab had a dramatic effect on A $\beta$  lowering, donanemab was so effective in lowering A $\beta$  that the drug was discontinued in many participants during the trial because their A $\beta$  levels by PET fell essentially to zero; however, the clinical impact of donanemab was very small. As a replication study of donanemab is under way, a discussion of the clinical meaningfulness of the effect size of donanemab will have to await its outcome. In addition, the outcome of the phase III trial of lecanemab<sup>265</sup> will also serve to inform the field on whether A $\beta$ -lowering strategies will be endorsed as clinically meaningful.

Behavioural dyscontrol in persons with dementia due to AD, usually in the moderate to severe stages, is a particular challenge to manage. Frightening hallucinations, delusions that lead to socially disruptive behaviours or physically aggressive behaviours will invariably require pharmacological intervention. Pimavanserin, a selective serotonin inverse agonist<sup>269</sup>, is currently approved in the USA and Europe for Parkinson disease dementia psychosis but it is being examined in the USA for a broader indication to include dementia-related psychosis in general. Pimavanserin may be the only medication to gain a specific indication for the treatment of behaviours collectively referred to as agitation, namely frightening hallucinations and delusional thinking, physically aggressive behaviours and other socially disruptive behaviours. Atypical antipsychotics, such as quetiapine, are generally the mainstays of treatment for agitation in patients with dementia. However, this class of drugs is associated with a risk of increased all-cause mortality. Other antipsychotics that may be less sedating have a risk for the development of extrapyramidal signs. Drug-induced parkinsonism in persons with dementia is an unacceptable consequence of attempts to control agitation.

#### Quality of life

The degree of cognitive impairment in AD has a dramatic effect on the patient's desires and abilities to engage in some activities. The severity of cognitive impairment and the pattern of cognitive domain losses are inversely related to the capability of insight on the part of the patient. Giving up previously enjoyed pastimes and hobbies may be less distressing for patients than it is for family caregivers who observe that change in behaviour. In fact, patient and caregiver goals are often divergent<sup>270</sup>.

MCI and dementia are a family affair and quality of life is as much of an issue for the primary family caregiver as it is for the patient. Even if a potent therapy were available, the changes in the daily life of a patient with cognitive impairment and their family can take an emotional toll and affect their quality of life. The stress of a diagnosis of MCI or dementia may be especially high in families in which the patient is under the age of 65 years and who had been working or had dependent children still at home<sup>271</sup>. Care of the caregiver will always be as important as care of the patient. The quality of life of both patient and caregiver is affected by several factors such as other comorbidities, physical limitations, hearing limitations, visual limitations, mood disorders, pain disorders and sleep disorders. Some of these are modifiable or manageable. The quality of life of a patient and caregiver is also affected by unrelated culture and environmental factors such as the composition of the family unit, the physical amenities or challenges of the place of residence, the family financial situation, or the health of key family members on whom the patient may depend. Although health-care providers may not have the time or expertise to provide social care consultations and such services are not available in all communities, volunteer organizations such as the Alzheimer's Association and the Alzheimer's Disease International can be a resource for providing consultation

to families of persons with dementia. Interventions for patients and their families can be of value in improving a sense of well-being of both parties<sup>272</sup>.

Patients with AD and their families have several key encounters with medical professionals over the course of the illness. Both the explicit message and the implicit comfort and empathy that those encounters convey can have a major effect on the sense of well-being of the patient and their family. When the diagnosis is rendered for the first time, it can be very stressful<sup>257</sup>. It is never easy to give a life-changing diagnosis but doing so with empathy, patience and a touch of optimism can make a huge difference for families. An honest discussion of therapeutic options and lifestyle activities that enhance the quality of life of the patient and family is deeply appreciated, although sometimes that discussion needs to take place after the implications of the diagnosis can be digested by the family and patient. Some but not all families and patients perceive that there is a stigma associated with a diagnosis of cognitive impairment, dementia or AD. Discouraging such a belief must originate with the health-care provider and the equanimity about the diagnosis that they project. Another difficult point for patient and family occurs around life-changing events such as the need to leave employment, to stop driving or to move out of one's home and into some other living arrangement. The decision to place a patient in a residential care facility is a particularly difficult time. Additionally, of course, end-of-life decisions will have to be faced. Health-care professionals can make these passages through the saga of dementia much less painful by offering empathy, knowledge, validation of the caregiver's decision-making and perhaps sometimes a little nudge to make a painful decision.

### Outlook

Managing cognitive impairment due to AD is an issue of colossal scale and breadth, including basic cell biology, systems biology, clinical practice, human therapeutics and population-health implementation science. In clinical care, the timely recognition of symptomatic cognitive impairment remains an obstacle to quality care. In all countries, expertise in cognitive disorders at the primary care level could be improved substantially. New approaches to timely diagnosis using innovative technologies, such as smartphones and virtual medical encounters, might be transformative and create more efficient but informative clinical assessments. Although clinical diagnosis will always rely on direct interactions between clinicians, patients and family caregivers, various technologies may provide objective documentation of changes in a patient's behaviour that had escaped detection by family caregivers. For example, social withdrawal is a common accompaniment of changes in cognitive function. Devices that measure mobility could be used to identify when decreases in activities outside the home began. Of course, such technology-derived information would need to be validated against human observations.

The last decade has seen much effort into prevention strategies for dementia using low-cost available techniques and technologies such as diet, exercise, cognitive training and attention to vascular risk factor mitigation.

The FINGER study<sup>253</sup> is unique in its design and its claims of success compared to other multidimensional intervention programmes. This study recruited persons with lower ratings of vascular health, thereby enriching the trial with persons likely to benefit from interventions for lifestyle changes, diet and exercise. Lessons learned from the unsuccessful trials<sup>273–275</sup> should enable researchers to choose the right participants and develop the right intervention strategies to improve upon the FINGER study paradigm. The translation of interventions suitable for highly motivated research subjects into strategies for persons who have less health-conscious world-views must also be part of implementing non-pharmacological interventions. The development of strategies that enable longer periods of follow-up for interventions of all types but especially non-pharmacological ones should be a goal for the field. There are practical and ethical limitations on the duration of randomized controlled trials; therefore, alternative trial designs that minimize the loss of scientific rigour are needed.

Acceptance of the multi-aetiologic nature of later-life cognitive impairment must be recognized, although it increases the complexity of defining the relative contributions of individual pathophysiologies<sup>6</sup>. Blood-based biomarkers for AD, vascular injury, TDP43,  $\alpha$ -synuclein and synaptic markers will dramatically improve aetiological characterization and assist in phenotyping patients in ways that might be therapeutically relevant. In addition, identifying effective treatments for cognitive impairment will also help to identify the aetiological relevance and will create the impetus throughout the health-care delivery system to become more proactive in diagnosing and treating cognitive impairment due to AD. Ongoing and future work in genomics<sup>276</sup>, proteomics<sup>277</sup> and lipidomics<sup>278</sup> must be pursued to help clarify promising targets for therapy. In addition, discovery at the interface of clinical AD and basic science should be directed to biological variables that substantially affect the rate of disease progression. Basic laboratory science in AD has expanded our knowledge dramatically and perhaps the critical target that will change how we approach AD therapeutics has already been reported. Rodent models of AD have not proved to be good predictors of success in humans<sup>279</sup> and therefore new model systems need to be developed such as induced pluripotent stem cells<sup>280</sup> or three-dimensional culture systems<sup>278</sup>.

A major bottleneck in the process of discovering effective therapeutics is the performance of clinical trials. As of 2020, our technology has not substantially improved upon a trial design that requires a large fraction of participants to receive a placebo, a minimum of 18 months per person, hundreds if not a thousand persons per treatment arm and clinical outcome measures that are noisy. Until the field can qualify a surrogate disease biomarker that reduces the number of participants and can find techniques to shorten the time to an efficacy readout, the process of working through a very small number of promising agents per year worldwide is far too slow.

Published online: 13 May 2021



1. Jessen, F. et al. A conceptual framework for research on subjective cognitive decline in preclinical Alzheimer's disease. *Alzheimers Dement.* **10**, 844–852 (2014).
2. Petersen, R. C. Mild cognitive impairment as a diagnostic entity. *J. Intern. Med.* **256**, 183–194 (2004).
3. McKhann, G. M. et al. The diagnosis of dementia due to Alzheimer's disease: recommendations from the National Institute on Aging and the Alzheimer's Association workgroup. *Alzheimers Dement.* **7**, 263–269 (2011).
4. Petersen, R. C. How early can we diagnose Alzheimer disease (and is it sufficient)? The 2017 Wartenberg lecture. *Neurology* **91**, 395–402 (2018).
5. Nelson, P. T. et al. Alzheimer's disease is not "brain aging": neuropathological, genetic, and epidemiological human studies. *Acta Neuropathol.* **121**, 571–587 (2011).
6. Boyle, P. A. et al. Person-specific contribution of neuropathologies to cognitive loss in old age. *Ann. Neurol.* **83**, 74–83 (2018).  
**A clinical-neuropathological analysis of >1,000 persons demonstrating how multiple aetiologies relate to late-life cognition.**
7. Schneider, J. A., Arvanitakis, Z., Leurgans, S. E. & Bennett, D. A. The neuropathology of probable Alzheimer disease and mild cognitive impairment. *Ann. Neurol.* **66**, 200–208 (2009).
8. Kapasi, A., DeCarli, C. & Schneider, J. A. Impact of multiple pathologies on the threshold for clinically overt dementia. *Acta Neuropathol.* **134**, 171–186 (2017).
9. Karanth, S. et al. Prevalence and clinical phenotype of quadruple misfolded proteins in older adults. *JAMA Neurol.* **77**, 1299–1307 (2020).
10. Brodaty, H. et al. The world of dementia beyond 2020. *J. Am. Geriatr. Soc.* **59**, 923–927 (2011).
11. Wu, Y. T. et al. The changing prevalence and incidence of dementia over time — current evidence. *Nat. Rev. Neurol.* **13**, 327–339 (2017).
12. Satizabal, C. L. et al. Incidence of dementia over three decades in the Framingham Heart Study. *N. Engl. J. Med.* **374**, 523–532 (2016).
13. Stern, Y. Cognitive reserve in ageing and Alzheimer's disease. *Lancet Neurol.* **11**, 1006–1012 (2012).
14. Tom, S. E. et al. Trends in incident dementia and early life socioeconomic status by birth cohort in the adult changes in thought study. *JAMA Open* **3**, e2011094 (2020).
15. Kovari, E., Herrmann, F. R., Bouras, C. & Gold, G. Amyloid deposition is decreasing in aging brains: an autopsy study of 1,599 older people. *Neurology* **82**, 326–331 (2014).
16. Niu, H., Álvarez-Álvarez, I., Guillén-Grima, F. & Aguinaga-Ontoso, I. Prevalence and incidence of Alzheimer's disease in Europe: a meta-analysis. *Neurologia* **32**, 523–532 (2017).
17. Hy, L. X. & Keller, D. M. Prevalence of AD among whites: a summary by levels of severity. *Neurology* **55**, 198–204 (2000).
18. Gillis, C., Mirzaei, F., Potashman, M., Ikram, M. A. & Maserejian, N. The incidence of mild cognitive impairment: a systematic review and data synthesis. *Alzheimers Dement.* **11**, 248–256 (2019).
19. Petersen, R. C. et al. Mild cognitive impairment due to Alzheimer's disease: criteria in the community. *Ann. Neurol.* **74**, 199–208 (2013).
20. Degenhardt, E. K. et al. Flortetapir F18 PET amyloid neuroimaging and characteristics in patients with mild and moderate Alzheimer dementia. *Psychosomatics* **57**, 208–216 (2016).
21. Robinson, J. L. et al. Neurodegenerative disease concomitant proteinopathies are prevalent, age-related and APOE4-associated. *Brain* **141**, 2181–2193 (2018).
22. Prince, M. et al. Recent global trends in the prevalence and incidence of dementia, and survival with dementia. *Alzheimers Res. Ther.* **8**, 23 (2016).
23. Röhr, S. et al. Estimating prevalence of subjective cognitive decline in and across international cohort studies of aging: a COSMIC study. *Alzheimers Res. Ther.* **12**, 167 (2020).
24. Petersen, R. C. et al. Practice guideline update summary: mild cognitive impairment: report of the guideline development, dissemination, and implementation subcommittee of the American academy of neurology. *Neurology* **90**, 126–135 (2018).
25. Petersen, R. C. et al. Prevalence of mild cognitive impairment is higher in men than in women. The Mayo Clinic Study of Aging. *Neurology* **75**, 889–897 (2010).
26. Mielke, M. M., Vemuri, P. & Rocca, W. A. Clinical epidemiology of Alzheimer's disease: assessing sex and gender differences. *Clin. Epidemiol.* **6**, 37–48 (2014).
27. Thambisetty, M., An, Y. & Tanaka, T. Alzheimer's disease risk genes and the age-at-onset phenotype. *Neurobiol. Aging* **34**, 2696.e1–5 (2013).
28. Haass, C., Kaether, C., Thinakaran, G. & Sisodia, S. Trafficking and proteolytic processing of APP. *Cold Spring Harb. Perspect. Med.* **2**, a006270 (2012).
29. Jonsson, T. et al. A mutation in APP protects against Alzheimer's disease and age-related cognitive decline. *Nature* **488**, 96–99 (2012).
30. van der Lee, S. J. et al. The effect of APOE and other common genetic variants on the onset of Alzheimer's disease and dementia: a community-based cohort study. *Lancet Neurol.* **17**, 434–444 (2018).
31. Bellenguez, C. et al. Contribution to Alzheimer's disease risk of rare variants in TREM2, SORL1, and ABCA7 in 1779 cases and 1273 controls. *Neurobiol. Aging* **59**, 220.e1–220.e9 (2017).
32. Leonenko, G. et al. Polygenic risk and hazard scores for Alzheimer's disease prediction. *Ann. Clin. Transl. Neurol.* **6**, 456–465 (2019).
33. Karch, C. M., Cruchaga, C. & Goate, A. M. Alzheimer's disease genetics: from the bench to the clinic. *Neuron* **83**, 11–26 (2014).
34. Kunkle, B. W. et al. Genetic meta-analysis of diagnosed Alzheimer's disease identifies new risk loci and implicates Aβ, tau, immunity and lipid processing. *Nat. Genet.* **51**, 414–430 (2019).
35. Livingston, G. et al. Dementia prevention, intervention, and care: 2020 report of the Lancet commission. *Lancet* **396**, 413–446 (2020).
36. Singh-Manoux, A. et al. Trajectories of depressive symptoms before diagnosis of dementia: a 28-year follow-up study. *JAMA Psychiatry* **74**, 712–718 (2017).
37. Gottesman, R. F. et al. Associations Between Midlife Vascular Risk Factors and 25-Year Incident Dementia in the Atherosclerosis Risk in Communities (ARIC) Cohort. *JAMA Neurol.* **74**, 1246–1254 (2017).
38. Samieri, C. et al. Association of cardiovascular health level in older age with cognitive decline and incident dementia. *JAMA* **320**, 657–664 (2018).
39. Gottesman, R. F. et al. Association between midlife vascular risk factors and estimated brain amyloid deposition. *JAMA* **317**, 1443–1450 (2017).
40. Vemuri, P. et al. Vascular and amyloid pathologies are independent predictors of cognitive decline in normal elderly. *Brain* **138**, 761–771 (2015).
41. Golde, T. E., DeKosky, S. T. & Galasko, D. Alzheimer's disease: the right drug, the right time. *Science* **362**, 1250–1251 (2018).
42. Herrup, K. The case for rejecting the amyloid cascade hypothesis. *Nat. Neurosci.* **18**, 794–799 (2015).
43. Zlokovic, B. V. et al. Vascular contributions to cognitive impairment and dementia (VICID): a report from the 2018 National Heart, Lung, and Blood Institute and National Institute of Neurological Disorders and Stroke Workshop. *Alzheimers Dement.* **16**, 1714–1733 (2020).
44. Arnold, S. E., Hyman, B. T., Flory, J., Damasio, A. R. & Van Hoesen, G. W. The topographical and neuroanatomical distribution of neurofibrillary tangles and neuritic plaques in the cerebral cortex of patients with Alzheimer's disease. *Cereb. Cortex* **1**, 103–116 (1991).  
**Graphic demonstration of the different regional distributions of Aβ and tau at autopsy.**
45. Montine, T. J. et al. National Institute on Aging-Alzheimer's Association guidelines for the neuropathologic assessment of Alzheimer's disease: a practical approach. *Acta Neuropathol.* **123**, 1–11 (2012).
46. Haass, C. & Selkoe, D. J. Soluble protein oligomers in neurodegeneration: lessons from the Alzheimer's amyloid β-peptide. *Nat. Rev. Mol. Cell Biol.* **8**, 101–112 (2007).
47. Holtzman, D. M., Morris, J. C. & Goate, A. M. Alzheimer's disease: the challenge of the second century. *Sci. Transl. Med.* **3**, 77sr71 (2011).
48. Thinakaran, G. & Koo, E. H. Amyloid precursor protein trafficking, processing, and function. *J. Biol. Chem.* **283**, 29615–29619 (2008).
49. Haass, C. & Willem, M. Secreted APP modulates synaptic activity: a novel target for therapeutic intervention? *Neuron* **101**, 557–559 (2019).
50. Cirrito, J. R. et al. Synaptic activity regulates interstitial fluid amyloid-β levels in vivo. *Neuron* **48**, 913–922 (2005).
51. Kang, J. E. et al. Amyloid-β dynamics are regulated by orexin and the sleep-wake cycle. *Science* **326**, 1005–1007 (2009).
52. Boespflug, E. L. & Iliff, J. J. The emerging relationship between interstitial fluid-cerebrospinal fluid exchange, amyloid-β, and sleep. *Biol. Psychiatry* **83**, 328–336 (2018).
53. Spire-Jones, T. L. & Hyman, B. T. The intersection of amyloid β and tau at synapses in Alzheimer's disease. *Neuron* **82**, 756–771 (2014).
54. Benarroch, E. E. Glutamatergic synaptic plasticity and dysfunction in Alzheimer disease: emerging mechanisms. *Neurology* **91**, 125–132 (2018).
55. Rice, H. C. et al. Secreted amyloid-β precursor protein functions as a GABA(B)R1a ligand to modulate synaptic transmission. *Science* **363**, ea04827 (2019).
56. Müller, U. C., Deller, T. & Korte, M. Not just amyloid: physiological functions of the amyloid precursor protein family. *Nat. Rev. Neurosci.* **18**, 281–298 (2017).
57. Small, S. A. & Petsko, G. A. Endosomal recycling reconciles the Alzheimer's disease paradox. *Sci. Transl. Med.* **12**, eabb1717 (2020).
58. Gallardo, G. & Holtzman, D. M. Amyloid-β and tau at the crossroads of Alzheimer's disease. *Adv. Exp. Med. Biol.* **1184**, 187–203 (2019).
59. Pooler, A. M., Noble, W. & Hanger, D. P. A role for tau at the synapse in Alzheimer's disease pathogenesis. *Neuropharmacology* **76** (Pt A), 1–8 (2014).
60. Eftekharzadeh, B. et al. Tau protein disrupts nucleocytoplasmic transport in Alzheimer's disease. *Neuron* **99**, 925–940.e7 (2018).
61. Kent, S. A., Spire-Jones, T. L. & Durrant, C. S. The physiological roles of tau and Aβ: implications for Alzheimer's disease pathology and therapeutics. *Acta Neuropathol.* **140**, 417–447 (2020).
62. Yamada, K. et al. Neuronal activity regulates extracellular tau in vivo. *J. Exp. Med.* **211**, 387–393 (2014).
63. Wu, J. W. et al. Neuronal activity enhances tau propagation and tau pathology in vivo. *Nat. Neurosci.* **19**, 1085–1092 (2016).
64. de Calignon, A. et al. Propagation of tau pathology in a model of early Alzheimer's disease. *Neuron* **73**, 685–697 (2012).
65. Dujardin, S. et al. Tau molecular diversity contributes to clinical heterogeneity in Alzheimer's disease. *Nat. Med.* **26**, 1256–1263 (2020).  
**A clinical-neuropathological-molecular demonstration of how post-translational modifications of tau might play a role in the rate of clinical progression.**
66. Shi, Y. et al. ApoE4 markedly exacerbates tau-mediated neurodegeneration in a mouse model of tauopathy. *Nature* **549**, 523–527 (2017).
67. Gratzke, M. et al. Impact of TREM2R47H variant on tau pathology-induced gliosis and neurodegeneration. *J. Clin. Invest.* **130**, 4954–4968 (2020).
68. Shi, Y. et al. Microglia drive APOE-dependent neurodegeneration in a tauopathy mouse model. *J. Exp. Med.* **216**, 2546–2561 (2019).
69. Braak, H., Thal, D. R., Ghebremedhin, E. & Del Tredici, K. Stages of the pathologic process in Alzheimer disease: age categories from 1 to 100 years. *J. Neuropathol. Exp. Neurol.* **70**, 960–969 (2011).
70. Braak, H. & Braak, E. Neuropathological staging of Alzheimer-related changes. *Acta Neuropathol.* **82**, 239–259 (1991).
71. Delacourte, A. et al. The biochemical pathway of neurofibrillary degeneration in aging and Alzheimer's disease. *Neurology* **52**, 1158–1165 (1999).
72. Price, J. L. & Morris, J. C. Tangles and plaques in nondemented aging and "preclinical" Alzheimer's disease. *Ann. Neurol.* **45**, 358–368 (1999).
73. Delacourte, A. et al. Tau aggregation in the hippocampal formation: an ageing or a pathological process? *Exp. Gerontol.* **37**, 1291–1296 (2002).
74. Cray, J. F. et al. Primary age-related tauopathy (PART): a common pathology associated with human aging. *Acta Neuropathol.* **128**, 755–766 (2014).
75. Jack, C. R. et al. The bivariate distribution of amyloid-β and tau: relationship with established neurocognitive clinical syndromes. *Brain* **142**, 3230–3242 (2019).
76. Hanseeuw, B. J. et al. Association of amyloid and tau with cognition in preclinical Alzheimer disease: a longitudinal study. *JAMA Neurol.* **76**, 915–924 (2019).

77. Ossenkoppele, R. et al. Tau PET patterns mirror clinical and neuroanatomical variability in Alzheimer's disease. *Brain* **139**, 1551–1567 (2016).
78. Graff-Radford, J. et al. New insights into atypical Alzheimer's disease in the era of biomarkers. *Lancet Neurol.* **20**, 222–234 (2021).
79. Kim, J., Basak, J. M. & Holtzman, D. M. The role of apolipoprotein E in Alzheimer's disease. *Neuron* **63**, 287–303 (2009).
80. Huynh, T. V., Davis, A. A., Ulrich, J. D., Holtzman, D. M. & Apolipoprotein, E. and Alzheimer's disease: the influence of apolipoprotein E on amyloid- $\beta$  and other amyloidogenic proteins. *J. Lipid Res.* **58**, 824–836 (2017).
81. Reiman, E. M. et al. Fibrillar amyloid- $\beta$  burden in cognitively normal people at 5 levels of genetic risk for Alzheimer's disease. *Proc. Natl Acad. Sci. USA* **106**, 6820–6825 (2009).
82. Jack, C. R. Jr. et al. Age, sex, and APOE  $\epsilon 4$  effects on memory, brain structure, and  $\beta$ -amyloid across the adult life span. *JAMA Neurol.* **72**, 511–519 (2015).
83. van der Kant, R., Goldstein, L. S. B. & Ossenkoppele, R. Amyloid- $\beta$ -independent regulators of tau pathology in Alzheimer disease. *Nat. Rev. Neurosci.* **21**, 21–35 (2020).
84. Small, S. A. & Duff, K. Linking A $\beta$  and tau in late-onset Alzheimer's disease: a dual pathway hypothesis. *Neuron* **60**, 534–542 (2008).
85. Busche, M. A. & Hyman, B. T. Synergy between amyloid- $\beta$  and tau in Alzheimer's disease. *Nat. Neurosci.* **23**, 1183–1193 (2020).
86. Kurt, M. A., Davies, D. C., Kidd, M., Duff, K. & Howlett, D. R. Hyperphosphorylated tau and paired helical filament-like structures in the brains of mice carrying mutant amyloid precursor protein and mutant presenilin-1 transgenes. *Neurobiol. Dis.* **14**, 89–97 (2003).
87. Le, R. et al. Plaque-induced abnormalities in neurite geometry in transgenic models of Alzheimer disease: implications for neural system disruption. *J. Neuropathol. Exp. Neurol.* **60**, 753–758 (2001).
88. Leyns, C. E. G. et al. TREM2 function impedes tau seeding in neuritic plaques. *Nat. Neurosci.* **22**, 1217–1222 (2019).
89. Small, S. A., Simoes-Spassov, S., Mayeux, R. & Petsko, G. A. Endosomal traffic jams represent a pathogenic hub and therapeutic target in Alzheimer's disease. *Trends Neurosci.* **40**, 592–602 (2017).
90. Nixon, R. A. & Yang, D. S. Autophagy failure in Alzheimer's disease—locating the primary defect. *Neurobiol. Dis.* **43**, 38–45 (2011).
91. Palop, J. J. & Mucke, L. Network abnormalities and interneuron dysfunction in Alzheimer disease. *Nat. Rev. Neurosci.* **17**, 777–792 (2016).
92. Terry, R. D. et al. Physical basis of cognitive alterations in Alzheimer's disease: synapse loss is the major correlate of cognitive impairment. *Ann. Neurol.* **30**, 572–580 (1991).
93. DeKosky, S. T. & Scheff, S. W. Synapse loss in frontal cortex biopsies in Alzheimer's disease: correlation with cognitive severity. *Ann. Neurol.* **27**, 457–464 (1990).
- A real-time demonstration of a close correspondence between synapse loss and degree of cognitive impairment in brain biopsies from patients with AD.**
94. Spiers, T. L. et al. Dendritic spine abnormalities in amyloid precursor protein transgenic mice demonstrated by gene transfer and intravital multiphoton microscopy. *J. Neurosci.* **25**, 7278–7287 (2005).
95. Arbel-Ornath, M. et al. Soluble oligomeric amyloid- $\beta$  induces calcium dyshomeostasis that precedes synapse loss in the living mouse brain. *Mol. Neurodegener.* **12**, 27 (2017).
96. Zhou, L. et al. Tau association with synaptic vesicles causes presynaptic dysfunction. *Nat. Commun.* **8**, 15295 (2017).
97. Masliah, E., Hansen, L., Albright, T., Mallory, M. & Terry, R. D. Immunoelectron microscopic study of synaptic pathology in Alzheimer's disease. *Acta Neuropathol.* **81**, 428–433 (1991).
98. Henstridge, C. M. et al. Post-mortem brain analyses of the Lothian Birth Cohort 1936: extending lifetime cognitive and brain phenotyping to the level of the synapse. *Acta Neuropathol. Commun.* **3**, 53 (2015).
99. Lleo, A. et al. Changes in synaptic proteins precede neurodegeneration markers in preclinical Alzheimer's Disease cerebrospinal fluid. *Mol. Cell Proteom.* **18**, 546–560 (2019).
100. DeVos, S. L. et al. Synaptic tau seeding precedes tau pathology in human Alzheimer's disease brain. *Front. Neurosci.* **12**, 267 (2018).
101. Yoshizawa, Y. et al. Synapse loss and microglial activation precede tangles in a P301S tauopathy mouse model. *Neuron* **53**, 337–351 (2007).
102. Keskin, A. D. et al. BACE inhibition-dependent repair of Alzheimer's pathophysiology. *Proc. Natl Acad. Sci. USA* **114**, 8631–8636 (2017).
103. Busche, M. A. et al. Clusters of hyperactive neurons near amyloid plaques in a mouse model of Alzheimer's disease. *Science* **321**, 1686–1689 (2008).
104. Kuchibhotla, K. V. et al. A $\beta$  plaques lead to aberrant regulation of calcium homeostasis in vivo resulting in structural and functional disruption of neuronal networks. *Neuron* **59**, 214–225 (2008).
105. Menkes-Caspi, N. et al. Pathological tau disrupts ongoing network activity. *Neuron* **85**, 959–966 (2015).
106. Busche, M. A. et al. Tau impairs neural circuits, dominating amyloid- $\beta$  effects, in Alzheimer models in vivo. *Nat. Neurosci.* **22**, 57–64 (2019).
107. Anderson, K. J., Scheff, S. W. & DeKosky, S. T. Reactive synaptogenesis in hippocampal area CA1 of aged and young adult rats. *J. Comp. Neurol.* **252**, 374–384 (1986).
108. Geddes, J. W. & Cotman, C. W. Plasticity in hippocampal excitatory amino acid receptors in Alzheimer's disease. *Neurosci. Res.* **3**, 672–678 (1986).
109. Hyman, B. T., Kromer, L. J. & Van Hoesen, G. W. Reinnervation of the hippocampal perforant pathway zone in Alzheimer's disease. *Ann. Neurol.* **21**, 259–267 (1987).
110. Liu, L. et al. Trans-synaptic spread of tau pathology in vivo. *PLoS ONE* **7**, e31302 (2012).
111. Rauch, J. N. et al. LRP1 is a master regulator of tau uptake and spread. *Nature* **580**, 381–385 (2020).
112. Kounnas, M. Z. et al. LDL receptor-related protein, a multifunctional ApoE receptor, binds secreted  $\beta$ -amyloid precursor protein and mediates its degradation. *Cell* **82**, 331–340 (1995).
113. Rebeck, G. W., Reiter, J. S., Strickland, D. K. & Hyman, B. T. Apolipoprotein E in sporadic Alzheimer's disease: allelic variation and receptor interactions. *Neuron* **11**, 575–580 (1993).
114. Wilton, D. K., Dissing-Olesen, L. & Stevens, B. Neuron-glia signaling in synapse elimination. *Annu. Rev. Neurosci.* **42**, 107–127 (2019).
115. Nixon, R. A. The role of autophagy in neurodegenerative disease. *Nat. Med.* **19**, 983–997 (2013).
116. Menzies, F. M. et al. Autophagy and neurodegeneration: pathogenic mechanisms and therapeutic opportunities. *Neuron* **93**, 1015–1034 (2017).
117. Nixon, R. A. Amyloid precursor protein and endosomal-lysosomal dysfunction in Alzheimer's disease: inseparable partners in a multifactorial disease. *FASEB J.* **31**, 2729–2743 (2017).
118. Shehata, M. et al. Autophagy enhances memory erasure through synaptic destabilization. *J. Neurosci.* **38**, 3809–3822 (2018).
119. Glatigny, M. et al. Autophagy is required for memory formation and reverses age-related memory decline. *Curr. Biol.* **29**, 435–448.e8 (2019).
120. Cataldo, A. M. et al. Endocytic pathway abnormalities precede amyloid  $\beta$  deposition in sporadic Alzheimer's disease and Down syndrome: differential effects of APOE genotype and presenilin mutations. *Am. J. Pathol.* **157**, 277–286 (2000).
121. Van Acker, Z. P., Bretou, M. & Annaert, W. Endo-lysosomal dysregulations and late-onset Alzheimer's disease: impact of genetic risk factors. *Mol. Neurodegener.* **14**, 20 (2019).
122. Sui, C. N. et al. Cathepsin D regulates cerebral A $\beta$  42/40 ratios via differential degradation of A $\beta$ 42 and A $\beta$ 40. *Alzheimers Res. Ther.* **12**, 80 (2020).
123. Kwart, D. et al. A large panel of isogenic APP and PSEN1 mutant human iPSC neurons reveals shared endosomal abnormalities mediated by APP  $\beta$ -CTFs, not A $\beta$ . *Neuron* **104**, 256–270.e5 (2019).
- Evidence from induced pluripotent stem cells on the critical role of endosomal dysregulation in the pathogenesis of A $\beta$  and tau-induced disease.**
124. Pensalfini, A. et al. Endosomal dysfunction induced by directly over-activating Rab5 recapitulates prodromal and neurodegenerative features of Alzheimer's disease. *Cell Rep.* **35**, 108420 (2020).
125. Lauritzen, I. et al. Intraneuronal aggregation of the  $\beta$ -CTF fragment of APP (C99) induces A $\beta$ -independent lysosomal-autophagic pathology. *Acta Neuropathol.* **132**, 257–276 (2016).
126. Lee, J. H. et al. Presenilin 1 maintains lysosomal Ca<sup>2+</sup> homeostasis via TRPML1 by regulating vATPase-mediated lysosome acidification. *Cell Rep.* **12**, 1430–1444 (2015).
127. Lee, J. H. et al.  $\beta$ 2-adrenergic agonists rescue lysosome acidification and function in PSEN1 deficiency by reversing defective ER-to-lysosome delivery of ClC-7. *J. Mol. Biol.* **432**, 2633–2650 (2020).
128. Morel, N. & Poëa-Guyon, S. The membrane domain of vacuolar H<sup>+</sup>ATPase: a crucial player in neurotransmitter exocytotic release. *Cell. Mol. Life Sci.* **72**, 2561–2573 (2015).
129. Higashida, H., Yokoyama, S., Tsuji, C. & Muramatsu, S. I. Neurotransmitter release: vacuolar ATPase V0 sector c-subunits in possible gene or cell therapies for Parkinson's, Alzheimer's, and psychiatric diseases. *J. Physiol. Sci.* **67**, 11–17 (2017).
130. El Far, O. & Seagar, M. A role for V-ATPase subunits in synaptic vesicle fusion? *J. Neurochem.* **117**, 603–612 (2011).
131. Peng, K. Y. et al. Apolipoprotein E4 genotype compromises brain exosome production. *Brain* **142**, 163–175 (2019).
132. Liu, R. Q. et al. Membrane localization of  $\beta$ -amyloid 1–42 in lysosomes: a possible mechanism for lysosome labilization. *J. Biol. Chem.* **285**, 19986–19996 (2010).
133. Morishita, H. & Mizushima, N. Diverse cellular roles of autophagy. *Annu. Rev. Cell Dev. Biol.* **35**, 453–475 (2019).
134. Levine, B. & Kroemer, G. Biological functions of autophagy genes: a disease perspective. *Cell* **176**, 11–42 (2019).
135. Bordin, M. et al. Autophagy flux in CA1 neurons of Alzheimer hippocampus: Increased induction overburdens failing lysosomes to propel neuritic dystrophy. *Autophagy* **12**, 2467–2483 (2016).
136. Moreira, P. I., Carvalho, C., Zhu, X., Smith, M. A. & Perry, G. Mitochondrial dysfunction is a trigger of Alzheimer's disease pathophysiology. *Biochim. Biophys. Acta* **1802**, 2–10 (2010).
137. Nixon, R. A. The aging lysosome: an essential catalyst for late-onset neurodegenerative diseases. *Biochim. Biophys. Acta Proteins Proteom.* **1868**, 140443 (2020).
138. Whyte, L. S., Lau, A. A., Hemsley, K. M., Hopwood, J. J. & Sargeant, T. J. Endo-lysosomal and autophagic dysfunction: a driving factor in Alzheimer's disease? *J. Neurochem.* **140**, 703–717 (2017).
139. Pensalfini, A. et al. Intracellular amyloid and the neuronal origin of Alzheimer neuritic plaques. *Neurobiol. Dis.* **71**, 53–61 (2014).
140. Adalbert, R. et al. Severely dystrophic axons at amyloid plaques remain continuous and connected to viable cell bodies. *Brain* **132**, 402–416 (2009).
141. Nixon, R. A. & Yang, D. S. Autophagy and neuronal cell death in neurological disorders. *Cold Spring Harb. Perspect. Biol.* **4**, a008839 (2012).
142. Nakanishi, H. Microglial cathepsin B as a key driver of inflammatory brain diseases and brain aging. *Neural Regen. Res.* **15**, 25–29 (2020).
143. Lowry, J. R. & Klegeris, A. Emerging roles of microglial cathepsins in neurodegenerative disease. *Brain Res. Bull.* **139**, 144–156 (2018).
144. Sarlus, H. & Heneka, M. T. Microglia in Alzheimer's disease. *J. Clin. Invest.* **127**, 3240–3249 (2017).
145. Deretic, V., Saitoh, T. & Akira, S. Autophagy in infection, inflammation and immunity. *Nat. Rev. Immunol.* **13**, 722–737 (2013).
146. Cho, M. H. et al. Autophagy in microglia degrades extracellular  $\beta$ -amyloid fibrils and regulates the NLRP3 inflammasome. *Autophagy* **10**, 1761–1775 (2014).
147. Jay, T. R. et al. Disease progression-dependent effects of TREM2 deficiency in a mouse model of Alzheimer's disease. *J. Neurosci.* **37**, 637–647 (2017).
148. Lewcock, J. W. et al. Emerging microglia biology defines novel therapeutic approaches for Alzheimer's disease. *Neuron* **108**, 801–821 (2020).
149. Kim, H. J. et al. Deficient autophagy in microglia impairs synaptic pruning and causes social behavioral defects. *Mol. Psychiatry* **22**, 1576–1584 (2017).
150. Saido, T. & Saitoh, M. A. Proteolytic degradation of amyloid  $\beta$ -protein. *Cold Spring Harb. Perspect. Med.* **2**, a006379 (2012).
151. Rasmussen, M. K., Mestre, H. & Nedergaard, M. The glymphatic pathway in neurological disorders. *Lancet Neurol.* **17**, 1016–1024 (2018).
152. Buckner, R. L., Andrews-Hanna, J. R. & Schacter, D. L. The brain's default network: anatomy, function, and relevance to disease. *Ann. N. Y. Acad. Sci.* **1124**, 1–38 (2008).
- Demonstration of the relationship between the default mode network and amyloid accumulation.**

153. Greicius, M. D., Srivastava, G., Reiss, A. L. & Menon, V. Default-mode network activity distinguishes Alzheimer's disease from healthy aging: evidence from functional MRI. *Proc. Natl Acad. Sci. USA* **101**, 4637–4642 (2004).
154. Buckner, R. L. et al. Cortical hubs revealed by intrinsic functional connectivity: mapping, assessment of stability, and relation to Alzheimer's disease. *J. Neurosci.* **29**, 1860–1873 (2009).
155. Agosta, F. et al. Resting state fMRI in Alzheimer's disease: beyond the default mode network. *Neurobiol. Aging* **33**, 1564–1578 (2012).
156. Whitwell, J. L. et al. Working memory and language network dysfunctions in logopenic aphasia: a task-free fMRI comparison with Alzheimer's dementia. *Neurobiol. Aging* **36**, 1245–1252 (2015).
157. Townley, R. A. et al. Progressive dysexecutive syndrome due to Alzheimer's disease: a description of 55 cases and comparison to other phenotypes. *Brain Commun.* **2**, fcaa068 (2020).
158. Franzmeier, N. et al. Functional brain architecture is associated with the rate of tau accumulation in Alzheimer's disease. *Nat. Commun.* **11**, 347 (2020).
159. Sintini, I. et al. Tau and amyloid relationships with resting-state functional connectivity in atypical Alzheimer's disease. *Cereb. Cortex* <https://doi.org/10.1093/cercor/bhaa319> (2020).
160. Jones, D. T. et al. Tau, amyloid, and cascading network failure across the Alzheimer's disease spectrum. *Cortex* **97**, 143–159 (2017).
161. Sepulcre, J. et al. Hierarchical organization of tau and amyloid deposits in the cerebral cortex. *JAMA Neurol.* **74**, 813–820 (2017).
162. Jack, C. R. Jr. et al. Amyloid-first and neurodegeneration-first profiles characterize incident amyloid PET positivity. *Neurology* **81**, 1732–1740 (2015).
163. Protas, H. D. et al. Posterior cingulate glucose metabolism, hippocampal glucose metabolism, and hippocampal volume in cognitively normal, late-middle-aged persons at 3 levels of genetic risk for Alzheimer disease. *JAMA Neurol.* **70**, 320–325 (2013).
164. Franzmeier, N. et al. Patient-centered connectivity-based prediction of tau pathology spread in Alzheimer's disease. *Sci. Adv.* **6**, eabd1327 (2020). **Analysis showing how regional tau expansion follows connectivity patterns.**
165. D'Onofrio, G. et al. Neuropsychiatric symptoms and functional status in Alzheimer's disease and vascular dementia patients. *Curr. Alzheimer Res.* **9**, 759–771 (2012).
166. Lehmann, M. et al. Diverging patterns of amyloid deposition and hypometabolism in clinical variants of probable Alzheimer's disease. *Brain* **136**, 844–858 (2013).
167. Crutch, S. J. et al. Consensus classification of posterior cortical atrophy. *Alzheimers Dement.* **13**, 870–884 (2017).
168. Gorno-Tempini, M. L. et al. The logopenic/phonological variant of primary progressive aphasia. *Neurology* **71**, 1227–1234 (2008).
169. Bergeron, D. et al. Prevalence of amyloid- $\beta$  pathology in distinct variants of primary progressive aphasia. *Ann. Neurol.* **84**, 729–740 (2018).
170. Ossenkoppele, R. et al. The behavioural/dysexecutive variant of Alzheimer's disease: clinical, neuroimaging and pathological features. *Brain* **138**, 2732–2749 (2015).
171. Murray, M. E. et al. Neuropathologically defined subtypes of Alzheimer's disease with distinct clinical characteristics: a retrospective study. *Lancet Neurol.* **10**, 785–796 (2011).
172. Clarfield, A. M. The decreasing prevalence of reversible dementias: an updated meta-analysis. *Arch. Intern. Med.* **163**, 2219–2229 (2003).
173. Beach, T. G., Monsell, S. E., Phillips, L. E. & Kukull, W. Accuracy of the clinical diagnosis of Alzheimer disease at national institute on aging Alzheimer disease centers, 2005–2010. *J. Neuropathol. Exp. Neurol.* **71**, 266–273 (2012).
174. McKeith, I. G. et al. Diagnosis and management of dementia with Lewy bodies: fourth consensus report of the DLB Consortium. *Neurology* **89**, 88–100 (2017).
175. Rascovsky, K. et al. Sensitivity of revised diagnostic criteria for the behavioural variant of frontotemporal dementia. *Brain* **134**, 2456–2477 (2011).
176. Gorno-Tempini, M. L. et al. Classification of primary progressive aphasia and its variants. *Neurology* **76**, 1006–1014 (2011).
177. Botha, H. et al. FDG-PET in tau-negative amnesic dementia resembles that of autopsy-proven hippocampal sclerosis. *Brain* **141**, 1201–1217 (2018).
178. Petersen, R. C. & Yaffe, K. Issues and questions surrounding screening for cognitive impairment in older patients. *JAMA* **323**, 722–724 (2020).
179. Patnode, C. D. et al. Screening for cognitive impairment in older adults: updated evidence report and systematic review for the US Preventive Services TaskForce. *JAMA* **323**, 764–785 (2020).
180. Jack, C. R. Jr. et al. NIA-AA research framework: toward a biological definition of Alzheimer's disease. *Alzheimers Dement.* **14**, 535–562 (2018).
181. Chetelat, G. et al. Amyloid-PET and  $^{18}\text{F}$ -FDG-PET in the diagnostic investigation of Alzheimer's disease and other dementias. *Lancet Neurol.* **19**, 951–962 (2020).
182. Klunk, W. E. et al. Imaging brain amyloid in Alzheimer's disease with Pittsburgh Compound-B. *Ann. Neurol.* **55**, 306–319 (2004).
183. Jack, C. R. J. et al. Introduction to revised criteria for the diagnosis of Alzheimer's disease: National Institute on Aging and the Alzheimer Association Workgroups. *Alzheimer's Dement.* **7**, 257–262 (2011).
184. Knopman, D. S. et al. Evolution of neurodegeneration-imaging biomarkers from clinically normal to dementia in the Alzheimer disease spectrum. *Neurobiol. Aging* **46**, 32–42 (2016).
185. Schröder, J. & Pantel, J. Neuroimaging of hippocampal injury in early recognition of Alzheimer's disease—a critical appraisal after two decades of research. *Psychiatry Res. Neuroimaging* **247**, 71–78 (2016).
186. Petersen, C. et al. Alzheimer's disease clinical variants show distinct regional patterns of neurofibrillary tangle accumulation. *Acta Neuropathol.* **138**, 597–612 (2019).
187. Ridha, B. H. et al. Tracking atrophy progression in familial Alzheimer's disease: a serial MRI study. *Lancet Neurol.* **5**, 828–834 (2006).
188. Greenberg, S. M. et al. Cerebral amyloid angiopathy and Alzheimer disease - one peptide, two pathways. *Nat. Rev. Neurol.* **16**, 30–42 (2020).
189. Graff-Radford, J. et al. Cerebral microbleeds: prevalence and relationship to amyloid burden. *Neurology* **92**, e253–e262 (2019).
190. Li, X. et al. The significant effects of cerebral microbleeds on cognitive dysfunction: an updated meta-analysis. *PLoS ONE* **12**, e0185145 (2017).
191. Laforce, R. Jr. et al. Parallel ICA of FDG-PET and PIB-PET in three conditions with underlying Alzheimer's pathology. *Neuroimage Clin.* **4**, 508–516 (2014).
192. Caroli, A. et al. Mild cognitive impairment with suspected nonamyloid pathology (SNAP): prediction of progression. *Neurology* **84**, 508–515 (2015).
193. Iaccarino, L., Sala, A. & Perani, D. Predicting long-term clinical stability in amyloid-positive subjects by FDG-PET. *Ann. Clin. Transl. Neurol.* **6**, 1113–1120 (2019).
194. Villemagne, V. L., Doré, V., Burnham, S. C., Masters, C. L. & Rowe, C. C. Imaging tau and amyloid- $\beta$  proteinopathies in Alzheimer disease and other conditions. *Nat. Rev. Neurol.* **14**, 225–236 (2018).
195. Clark, C. M. et al. Cerebral PET with florbetapir compared with neuropathology at autopsy for detection of neuritic amyloid- $\beta$  plaques: a prospective cohort study. *Lancet Neurol.* **11**, 669–678 (2012).
196. Murray, M. E. et al. Clinicopathologic and 11C-Pittsburgh compound B implications of Thal amyloid phase across the Alzheimer's disease spectrum. *Brain* **138**, 1370–1381 (2015).
197. Klunk, W. E. et al. The centiloid project: standardizing quantitative amyloid plaque estimation by PET. *Alzheimers Dement.* **11**, 1–15.e1–4 (2015).
198. Landau, S. M. et al. Comparing positron emission tomography imaging and cerebrospinal fluid measurements of  $\beta$ -amyloid. *Ann. Neurol.* **74**, 826–836 (2013).
199. Leuzy, A. et al. Pittsburgh compound B imaging and cerebrospinal fluid amyloid- $\beta$  in a multicentre European memory clinic study. *Brain* **139**, 2540–2553 (2016).
200. Grothe, M. J. et al. In vivo staging of regional amyloid deposition. *Neurology* **89**, 2031–2038 (2017).
201. Jagust, W. J. & Landau, S. M. Temporal dynamics of  $\beta$ -amyloid accumulation in aging and Alzheimer's disease. *Neurology* **96**, e1347–e1357 (2021).
202. Jack, C. R. Jr. et al. Prevalence of biologically vs clinically defined Alzheimer spectrum entities using THE National Institute on Aging-Alzheimer's association research framework. *JAMA Neurol.* **76**, 1174–1183 (2019).
203. Johnson, K. A. et al. Appropriate use criteria for amyloid PET: a report of the amyloid imaging task force, the society of nuclear medicine and molecular imaging, and the Alzheimer's association. *J. Nucl. Med.* **54**, 476–490 (2013).
204. Rabinovici, G. D. et al. Association of amyloid positron emission tomography with subsequent change in clinical management among medicare beneficiaries with mild cognitive impairment or dementia. *JAMA* **321**, 1286–1294 (2019). **A very large pragmatic trial of the value of A $\beta$  imaging in clinical dementia practice.**
205. de Wilde, A. et al. Association of amyloid positron emission tomography with changes in diagnosis and patient treatment in an unselected memory clinic cohort: the ABIDE project. *JAMA Neurol.* **75**, 1062–1070 (2018).
206. Jeong, H. J. et al. [ $^{18}\text{F}$ ]THK5351 PET imaging in patients with mild cognitive impairment. *J. Clin. Neurol.* **16**, 202–214 (2020).
207. Pascoal, T. A. et al.  $^{18}\text{F}$ -MK-6240 PET for early and late detection of neurofibrillary tangles. *Brain* **143**, 2818–2830 (2020).
208. Leuzy, A. et al. Diagnostic performance of RO948 F18 tau positron emission tomography in the differentiation of Alzheimer disease from other neurodegenerative disorders. *JAMA Neurol.* **77**, 955–965 (2020).
209. Ossenkoppele, R. et al. Discriminative accuracy of [ $^{18}\text{F}$ ]flortaucipir positron emission tomography for Alzheimer disease vs other neurodegenerative disorders. *JAMA* **320**, 1151–1162 (2018). **Demonstration of the remarkable specificity of an elevated tau PET signal outside of the medial temporal lobe for persons with elevated A $\beta$ .**
210. Aschenbrenner, A. J., Gordon, B. A., Benzinger, T. L. S., Morris, J. C. & Hassenstab, J. J. Influence of tau PET, amyloid PET, and hippocampal volume on cognition in Alzheimer disease. *Neurology* **91**, e859–e866 (2018).
211. Brier, M. R. et al. Tau and A $\beta$  imaging, CSF measures, and cognition in Alzheimer's disease. *Sci. Transl. Med.* **8**, 338ra366 (2016).
212. Harrison, T. M. et al. Longitudinal tau accumulation and atrophy in aging and Alzheimer disease. *Ann. Neurol.* **85**, 229–240 (2019).
213. Lu, M. et al. Aggregated tau measured by visual interpretation of flortaucipir positron emission tomography and the associated risk of clinical progression of mild cognitive impairment and Alzheimer disease: results from 2 phase III clinical trials. *JAMA Neurol.* **78**, 445–453 (2021).
214. Lowe, V. J. et al. Widespread brain tau and its association with ageing, Braak stage and Alzheimer's dementia. *Brain* **141**, 271–287 (2018).
215. Pontecorvo, M. J. et al. Relationships between flortaucipir PET tau binding and amyloid burden, clinical diagnosis, age and cognition. *Brain* **140**, 748–763 (2017).
216. Shaw, L. M. et al. Appropriate use criteria for lumbar puncture and cerebrospinal fluid testing in the diagnosis of Alzheimer's disease. *Alzheimers Dement.* **14**, 1505–1521 (2018).
217. Molinuevo, J. L. et al. Current state of Alzheimer's fluid biomarkers. *Acta Neuropathol.* **136**, 821–853 (2018).
218. Hansson, O. et al. CSF biomarkers of Alzheimer's disease concord with amyloid- $\beta$  PET and predict clinical progression: a study of fully automated immunoassays in BioFINDER and ADNI cohorts. *Alzheimers Dement.* **1**, 30029–30023 (2018).
219. Hansson, O. et al. Prediction of Alzheimer's disease using the CSF A $\beta$ 42/A $\beta$ 40 ratio in patients with mild cognitive impairment. *Dement. Geriatr. Cogn. Disord.* **23**, 316–320 (2007).
220. Wiltfang, J. et al. Amyloid  $\beta$  peptide ratio 42/40 but not A $\beta$ 42 correlates with phospho-Tau in patients with low- and high-CSF A $\beta$ 40 load. *J. Neurochem.* **101**, 1053–1059 (2007).
221. Mattsson, N. et al. CSF biomarkers and incipient Alzheimer disease in patients with mild cognitive impairment. *JAMA* **302**, 385–393 (2009).
222. Skillbäck, T. et al. Cerebrospinal fluid tau and amyloid- $\beta$ 1-42 in patients with dementia. *Brain* **138**, 2716–2731 (2015).
223. Buerger, K. et al. No correlation between CSF tau protein phosphorylated at threonine 181 with neocortical neurofibrillary pathology in Alzheimer's disease. *Brain* **130**, e82 (2007).
224. Seppälä, T. T. et al. CSF biomarkers for Alzheimer disease correlate with cortical brain biopsy findings. *Neurology* **78**, 1568–1575 (2012).

225. Barthélemy, N. R. et al. A soluble phosphorylated tau signature links tau, amyloid and the evolution of stages of dominantly inherited Alzheimer's disease. *Nat. Med.* **26**, 398–407 (2020).
226. Janelidze, S. et al. Cerebrospinal fluid p-tau217 performs better than p-tau181 as a biomarker of Alzheimer's disease. *Nat. Commun.* **11**, 1683 (2020).
227. Kern, S. et al. Association of cerebrospinal fluid neurofilament light protein with risk of mild cognitive impairment among individuals without cognitive impairment. *JAMA Neurol.* **76**, 187–193 (2019).
228. Zetterberg, H. & Bendlin, B. B. Biomarkers for Alzheimer's disease—preparing for a new era of disease-modifying therapies. *Mol. Psychiatry* **26**, 296–308 (2020).
229. Tarawneh, R. et al. Diagnostic and prognostic utility of the synaptic marker neurogranin in Alzheimer disease. *JAMA Neurol.* **73**, 561–571 (2016).
230. Schindler, S. E. et al. High-precision plasma  $\beta$ -amyloid 42/40 predicts current and future brain amyloidosis. *Neurology* **93**, e1647–e1659 (2019).
231. Karikari, T. K. et al. Blood phosphorylated tau 181 as a biomarker for Alzheimer's disease: a diagnostic performance and prediction modelling study using data from four prospective cohorts. *Lancet Neurol.* **19**, 422–433 (2020).
232. Palmqvist, S. et al. Discriminative accuracy of plasma phospho-tau217 for Alzheimer disease vs other neurodegenerative disorders. *JAMA* **324**, 772–781 (2020).
233. de Wolf, F. et al. Plasma tau, neurofilament light chain and amyloid- $\beta$  levels and risk of dementia; a population-based cohort study. *Brain* **143**, 1220–1232 (2020).
234. Ashton, N. J. et al. An update on blood-based biomarkers for non-Alzheimer neurodegenerative disorders. *Nat. Rev. Neurol.* **16**, 265–284 (2020).
235. Wattmo, C. & Wallin, A. K. Early- versus late-onset Alzheimer's disease in clinical practice: cognitive and global outcomes over 3 years. *Alzheimers Res. Ther.* **9**, 70 (2017).
236. Wilson, R. S. et al. Cognitive decline in incident Alzheimer's disease in a community population. *Neurology* **74**, 951–955 (2010).
237. van Harten, A. C. et al. Subjective cognitive decline and risk of MCI: the Mayo Clinic Study of Aging. *Neurology* **91**, e300–e312 (2018).
238. Kryscio, R. J. et al. Self-reported memory complaints: implications from a longitudinal cohort with autopsies. *Neurology* **83**, 1359–1365 (2014).
239. Stewart, R. et al. Longitudinal neuroimaging correlates of subjective memory impairment: 4-year prospective community study. *Br. J. Psychiatry* **198**, 199–205 (2011).
240. Amariglio, R. E. et al. Subjective cognitive complaints and amyloid burden in cognitively normal older individuals. *Neuropsychologia* **50**, 2880–2886 (2012).
241. Petersen, R. C. et al. Randomized controlled trials in mild cognitive impairment: sources of variability. *Neurology* **88**, 1751–1758 (2017).
242. Roberts, R. O. et al. Prevalence and outcomes of amyloid positivity among persons without dementia in a longitudinal, population-based setting. *JAMA Neurol.* **75**, 970–979 (2018).
243. Vos, S. J. et al. Prevalence and prognosis of Alzheimer's disease at the mild cognitive impairment stage. *Brain* **138**, 1327–1338 (2015).
244. Jack, C. R. Jr. et al. Associations of amyloid, tau, and neurodegeneration biomarker profiles with rates of memory decline among individuals without dementia. *JAMA* **321**, 2316–2325 (2019).
245. Knopman, D. S. et al. Entorhinal cortex tau, amyloid- $\beta$ , cortical thickness and memory performance in non-demented subjects. *Brain* **142**, 1148–1160 (2019).
246. Vos, S. J. et al. Preclinical Alzheimer's disease and its outcome: a longitudinal cohort study. *Lancet Neurol.* **12**, 957–965 (2013).
247. Serrano-Pozo, A., Qian, J., Monsell, S. E., Betensky, R. A. & Hyman, B. T. APOE $\epsilon$ 2 is associated with milder clinical and pathological Alzheimer disease. *Ann. Neurol.* **77**, 917–929 (2015).
248. Craft, S. et al. Accelerated decline in apolipoprotein E- $\epsilon$ 4 homozygotes with Alzheimer's disease. *Neurology* **51**, 149–153 (1998).
249. Butler, M. et al. Over-the-counter supplement interventions to prevent cognitive decline, mild cognitive impairment, and clinical Alzheimer-type dementia: a systematic review. *Ann. Intern. Med.* **168**, 52–62 (2018).
250. Fink, H. A. et al. Pharmacologic interventions to prevent cognitive decline, mild cognitive impairment, and clinical Alzheimer-type dementia: a systematic review. *Ann. Intern. Med.* **168**, 39–51 (2018).
251. Brasure, M. et al. Physical activity interventions in preventing cognitive decline and Alzheimer-type dementia: a systematic review. *Ann. Intern. Med.* **168**, 30–38 (2018).
252. Kane, R. L. et al. in *Interventions to Prevent Age-Related Cognitive Decline, Mild Cognitive Impairment, and Clinical Alzheimer's-Type Dementia* (Agency for Healthcare Research and Quality, 2017).
253. Ngandu, T. et al. A 2 year multidomain intervention of diet, exercise, cognitive training, and vascular risk monitoring versus control to prevent cognitive decline in at-risk elderly people (FINGER): a randomised controlled trial. *Lancet* **385**, 2255–2263 (2015).
- A first demonstration of non-pharmacological means of delaying cognitive decline in elderly persons at risk for dementia.**
254. Debette, S. et al. Midlife vascular risk factor exposure accelerates structural brain aging and cognitive decline. *Neurology* **77**, 461–468 (2011).
255. Williamson, J. D. et al. Effect of intensive vs standard blood pressure control on probable dementia: a randomized clinical trial. *JAMA* **321**, 553–561 (2019).
256. Reuben, D. B. et al. D-CARE: the dementia care study: design of a pragmatic trial of the effectiveness and cost effectiveness of health system-based versus community-based dementia care versus usual dementia care. *J. Am. Geriatr. Soc.* **68**, 2492–2499 (2020).
257. Fisk, J. D., Beattie, B. L., Donnelly, M., Byszewski, A. & Molnar, F. J. Disclosure of the diagnosis of dementia. *Alzheimers Dement.* **3**, 404–410 (2007).
258. Alpinar-Sencan, Z. & Schickanz, S. Addressing ethical challenges of disclosure in dementia prediction: limitations of current guidelines and suggestions to proceed. *BMC Med. Ethics* **21**, 33 (2020).
259. Amieva, H. et al. Group and individual cognitive therapies in Alzheimer's disease: the ETNA3 randomized trial. *Int. Psychogeriatr.* **28**, 707–717 (2016).
260. Tricco, A. C. et al. Comparisons of interventions for preventing falls in older adults: a systematic review and meta-analysis. *JAMA* **318**, 1687–1699 (2017).
261. Mohs, R. C. et al. A 1-year, placebo-controlled preservation of function survival study of donepezil in AD patients. *Neurology* **57**, 481–488 (2001).
262. Panza, F., Lozupone, M., Logroscino, G. & Imbimbo, B. P. A critical appraisal of amyloid- $\beta$ -targeting therapies for Alzheimer disease. *Nat. Rev. Neurol.* **15**, 73–88 (2019).
263. Rogers, M. B. <https://www.alzforum.org/news/research-news/aducanumab-still-needs-prove-itself-researchers-say> (2020).
264. Mintun, M. A. et al. Donanemab in early Alzheimer's disease. *N. Engl. J. Med.* <https://doi.org/10.1056/NEJMoa2100708> (2021).
265. Shugart, J. <https://www.alzforum.org/news/conference-coverage/banish-av-ban2401-antibody-makes-its-move-phase-3-program> (2020).
266. VandeVrede, L., Boxer, A. L. & Polydoro, M. Targeting tau: clinical trials and novel therapeutic approaches. *Neurosci. Lett.* **731**, 134919 (2020).
267. Rios-Romenets, S. et al. Baseline demographic, clinical, and cognitive characteristics of the Alzheimer's prevention initiative (API) autosomal-dominant Alzheimer's disease Colombia trial. *Alzheimers Dement* **16**, 1023–1030 (2020).
268. Insel, P. S., Donohue, M. C., Sperling, R., Hansson, O. & Mattsson-Carlgen, N. The A4 study:  $\beta$ -amyloid and cognition in 4432 cognitively unimpaired adults. *Ann. Clin. Transl. Neurol.* **7**, 776–785 (2020).
269. Ballard, C. et al. Evaluation of the safety, tolerability, and efficacy of pimavanserin versus placebo in patients with Alzheimer's disease psychosis: a phase 2, randomised, placebo-controlled, double-blind study. *Lancet Neurol.* **17**, 213–222 (2018).
270. Jennings, L. A. et al. Patient and caregiver goals for dementia care. *Qual. Life Res.* **26**, 685–693 (2017).
271. Bannion, S. et al. In it together: a qualitative meta-synthesis of common and unique psychosocial stressors and adaptive coping strategies of persons with young-onset dementia and their caregivers. *Gerontologist* <https://doi.org/10.1093/geront/gnaa169> (2020).
272. Moon, H. & Adams, K. B. The effectiveness of dyadic interventions for people with dementia and their caregivers. *Dementia* **12**, 821–839 (2013).
273. van Charante, E. P. et al. Effectiveness of a 6-year multidomain vascular care intervention to prevent dementia (preDIVA): a cluster-randomised controlled trial. *Lancet* **388**, 797–805 (2016).
274. Andrieu, S. et al. Effect of long-term omega 3 polyunsaturated fatty acid supplementation with or without multidomain intervention on cognitive function in elderly adults with memory complaints (MAPT): a randomised, placebo-controlled trial. *Lancet Neurol.* **16**, 377–389 (2017).
275. Sink, K. M. et al. Effect of a 24-month physical activity intervention vs health education on cognitive outcomes in sedentary older adults: the life randomized trial. *JAMA* **314**, 781–790 (2015).
276. De Jager, P. L., Yang, H. S. & Bennett, D. A. Deconstructing and targeting the genomic architecture of human neurodegeneration. *Nat. Neurosci.* **21**, 1310–1317 (2018).
277. Rehman, S. H. et al. Proteomics as a reliable approach for discovery of blood-based Alzheimer's disease biomarkers: a systematic review and meta-analysis. *Ageing Res. Rev.* **60**, 101066 (2020).
278. Mahajan, U. V. et al. Dysregulation of multiple metabolic networks related to brain methylation and polyamine pathways in Alzheimer disease: a targeted metabolomic and transcriptomic study. *PLoS Med.* **17**, e1003012 (2020).
279. Dawson, T. M., Golde, T. E. & Lagier-Tourenne, C. Animal models of neurodegenerative diseases. *Nat. Neurosci.* **21**, 1370–1379 (2018).
280. van der Kant, R. et al. Cholesterol metabolism is a druggable axis that independently regulates tau and amyloid- $\beta$  in iPSC-derived Alzheimer's disease neurons. *Cell Stem Cell* **24**, 363–375.e9 (2019).
281. American Psychiatric Association. *DSM-5: Diagnostic and Statistical Manual of Mental Disorders* 5th ed. (American Psychiatric Association, 2013).
282. Albert, M. et al. The diagnosis of mild cognitive impairment due to Alzheimer's disease: recommendations from the National Institute on Aging—Alzheimer's Association workgroups on diagnostic guidelines for Alzheimer's disease. *Alzheimers Dement.* **7**, 270–279 (2011).
283. Dubois, B. et al. Advancing research diagnostic criteria for Alzheimer's disease: the IWG-2 criteria. *Lancet Neurol.* **13**, 614–629 (2014).
284. Thal, D. R., Rub, U., Orantes, M. & Braak, H. Phases of A $\beta$ -deposition in the human brain and its relevance for the development of AD. *Neurology* **58**, 1791–1800 (2002).

#### Acknowledgements

The authors acknowledge research support from NIH (D.S.K. and R.C.P. P30 AG062677 and U01 AG006786; B.T.H., P30AG062421; R.A.N. P01 AG017617 and R01 AG062376).

#### Author contributions

Introduction (D.S.K.); Epidemiology (H.A.); Mechanisms/pathophysiology (D.T.J., R.A.N., B.T.H. and D.M.H.); Diagnosis, screening and prevention (G.C., R.C.P. and D.S.K.); Management (R.C.P. and D.S.K.); Quality of life (D.S.K.); Outlook (D.S.K.); Overview of Primer (D.S.K.).

#### Competing interests

D.S.K. served on a Data Safety Monitoring Board for the DIAN study. He serves on a Data Safety Monitoring Board for a tau therapeutic for Biogen but receives no personal compensation. He is a site investigator in a Biogen aducanumab trial. He is an investigator in a clinical trial sponsored by Lilly Pharmaceuticals and the University of Southern California. He serves as a consultant for Samus Therapeutics, Third Rock, Roche and Alzeca Biosciences but receives no personal compensation. He receives research support from the NIH. G.C. serves on the Scientific Advisory Board of the Fondation Vaincre Alzheimer but receives no personal compensation. She receives personal fees from Fondation d'entreprise MMA des Entrepreneurs du Futur and from Fondation Alzheimer as she serves in the Operational Committee. She receives research support from European Union Horizon 2020 research and innovation programme (grant agreement number 667696). Inserm, Fondation d'entreprise MMA des Entrepreneurs du Futur, Fondation Alzheimer, Programme Hospitalier de Recherche Clinique, Région Normandie, Association France Alzheimer et maladies apparentées and Fondation Vaincre Alzheimer. R.C.P. is a consultant for Biogen, Inc., Roche, Inc., Merck, Inc., Genentech Inc. and Eisai, Inc., has given educational lectures for GE Healthcare, receives publishing royalties from *Mild Cognitive Impairment*

(Oxford University Press, 2003), UpToDate, and receives research support from the NIH. B.T.H. has a family member who works at Novartis and owns stock in Novartis; he serves on the SAB of Dewpoint and owns stock. He serves on a scientific advisory board or is a consultant for Biogen, Novartis, Cell Signalling, the US Dept of Justice, Takeda, Vigil, W20 group and Seer. His laboratory is supported by sponsored research agreements with Abbvie, F Prim, and research grants from the National Institutes of Health, Cure Alzheimer's Fund, Tau Consortium, Brightfocus and the JPB Foundation. H.A. serves on the Scientific Advisory Board of the Observatoire des Mémoires but receives no personal compensation. She receives research support from Spoelberch Foundation, Association France Alzheimer et

maladies apparentées, the Regional Health Agency of Aquitaine and National Research Agency. D.M.H. reports being a Co-founder for C2N Diagnostics LLC and participating in scientific advisory boards/consulting for Genentech, C2N Diagnostics, Denali, Merck and Idorsia. He is an inventor on patents licensed by Washington University to C2N Diagnostics on the therapeutic use of anti-tau antibodies (this anti-tau antibody programme is licensed to Abbvie) and to Eli Lilly on the therapeutic use of an anti-amyloid- $\beta$  antibody. His laboratory receives research grants from the National Institutes of Health, Cure Alzheimer's Fund, Tau Consortium, the JPB Foundation, Good Ventures, Centene, BrightFocus and C2N Diagnostics. All other authors declare no competing interests.

**Peer review information**

*Nature Reviews Disease Primers* thanks K. Iqbal, D. Selkoe, H. Soininen and the other, anonymous, reviewer(s) for their contribution to the peer review of this work.

**Publisher's note**

Springer Nature remains neutral with regard to jurisdictional claims in published maps and institutional affiliations.

**Supplementary information**

The online version contains supplementary material available at <https://doi.org/10.1038/s41572-021-00269-y>.

© Springer Nature Limited 2021